

## MCL1 Rabbit mAb (AR1496)

### Key Features

Host Species:	Rabbit
Reactivity:	Human, Mouse, Rat
Applications:	WB, IHC, IF, IP, ELISA
Isotype:	IgG, Kappa
MW:	37kD (Calculated) 37kD (Observed)

### Recommended Dilution Ratios

IHC:	1:200-1000
WB:	1:2000-10000
IF:	1:200-1000
ELISA:	1:5000-20000
IP:	1:50-200

### Storage

-15°C to -25°C/1 year (Do not lower than -25°C)

### Basic Information

Clonality	Monoclonal
-----------	------------

### Immunogen Information

Specificity	Endogenous
-------------	------------

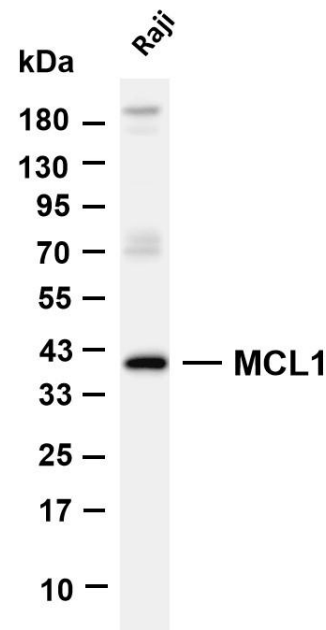
### Target Information

Gene name	MCL1
Protein Name	Induced myeloid leukemia cell differentiation protein Mcl-1

Organism	Gene ID	UniProt ID
Human	4170	Q07820
Mouse	17210	P97287
Rat	60430	Q9Z1P3

Cellular Localization	Cytoplasm, Nucleus
Tissue specificity	Ewing sarcoma, Mammary gland, Myeloid leukemia cell, Neuroblastoma, Placenta

Validation Data



Various whole cell lysates were separated by 4-20% SDS-PAGE, and the membrane was blotted with anti-MCL1 antibody. The HRP-conjugated Goat anti-Rabbit IgG(H + L) antibody was used to detect the antibody.

Lane 1: Raji

Predicted band size: 37kDa

Observed band size: 37kDa

For Research Use Only