

MDM2 Rabbit mAb (AR1498)

Key Features

Host Species:	Rabbit
Reactivity:	Human,Mouse,Rat
Applications:	WB,IHC,IF,IP,ELISA
Isotype:	IgG,Kappa
MW:	55kD (Calculated) 90kD (Observed)

Recommended Dilution Ratios

IHC:	1:200-1000
WB:	1:2000-10000
IF:	1:200-1000
ELISA:	1:5000-20000
IP:	1:50-200

Storage

-15°C to -25°C/1 year (Do not lower than -25°C)

Basic Information

Clonality	Monoclonal
-----------	------------

Immunogen Information

Specificity	Endogenous
-------------	------------

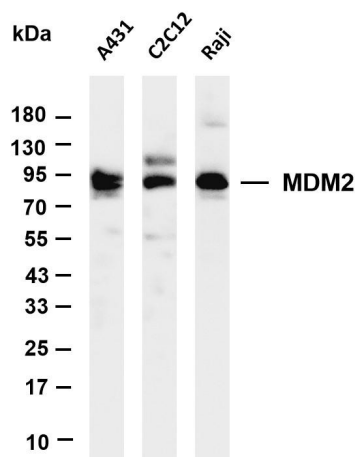
Target Information

Gene name	MDM2
Protein Name	E3 ubiquitin-protein ligase Mdm2

Organism	Gene ID	UniProt ID
Human	4193	Q00987
Mouse	17246	P23804

Cellular Localization	Cytoplasm, Nucleus Ubiquitous. Isoform Mdm2-A, isoform Mdm2-B, isoform Mdm2-C, isoform Mdm2-D, isoform Mdm2-E, isoform Mdm2-F and isoform Mdm2-G are observed in a range of cancers but absent in normal tissues.
Tissue specificity	

Validation Data



Various whole cell lysates were separated by 4-20% SDS-PAGE, and the membrane was blotted with anti-MDM2 antibody. The HRP-conjugated Goat anti-Rabbit IgG(H + L) antibody was used to detect the antibody.

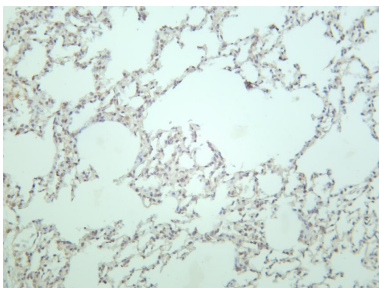
Lane 1: A431

Lane 2: C2C12

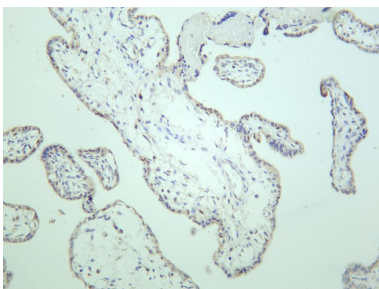
Lane 3: Raji

Predicted band size: 55kDa

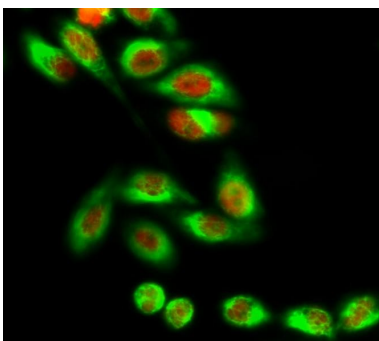
Observed band size: 90kDa



Rat lung was stained with anti-MDM2 rabbit antibody



Human placenta was stained with anti-MDM2 rabbit antibody



Immunofluorescence analysis of HeLa cell.

1. MDM2 Monoclonal Antibody(red) was diluted at 1:200(4 ° overnight). LC3B Monoclonal Antibody(green) was diluted at 1:200(4° overnight).
2. Goat Anti Rabbit Alexa Fluor 594 was diluted at 1:1000(room temperature, 50min). Goat Anti Mouse Alexa Fluor 488 was diluted at 1:1000(room temperature, 50min).