

## MECP2 Rabbit mAb (AR1499)

### Key Features

Host Species:	Rabbit
Reactivity:	Human, Mouse, Rat
Applications:	WB, IHC, IF, IP, ELISA
Isotype:	IgG, Kappa
MW:	52kD (Calculated) 75kD (Observed)

### Recommended Dilution Ratios

IHC:	1:200-1000
WB:	1:2000-10000
IF:	1:200-1000
ELISA:	1:5000-20000
IP:	1:50-200

### Storage

-15°C to -25°C/1 year (Do not lower than -25°C)

### Basic Information

Clonality	Monoclonal
-----------	------------

### Immunogen Information

Specificity	Endogenous
-------------	------------

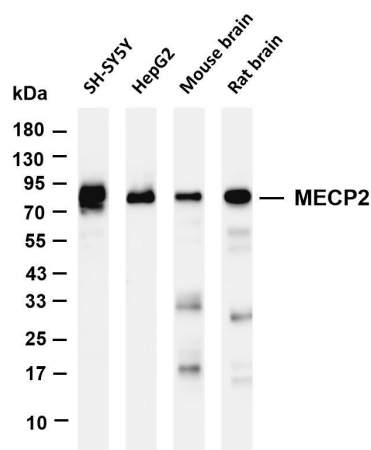
### Target Information

Gene name	MECP2
Protein Name	Methyl-CpG-binding protein 2

Organism	Gene ID	UniProt ID
Human	4204	P51608
Mouse	17257	Q9Z2D6
Rat	29386	Q00566

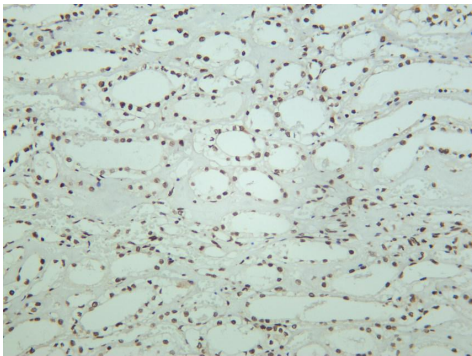
Cellular Localization	Nucleus
Tissue specificity	Present in all adult somatic tissues tested.

Validation Data

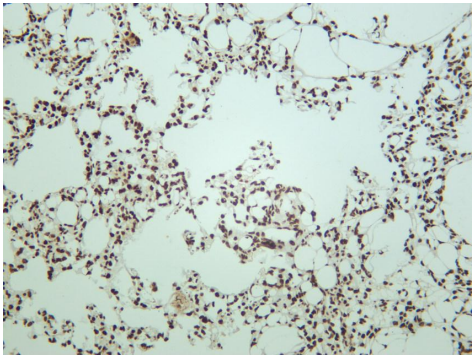


Various whole cell lysates were separated by 4-20% SDS-PAGE, and the membrane was blotted with anti-MECP2 antibody. The HRP-conjugated Goat anti-Rabbit IgG(H + L) antibody was used to detect the antibody.

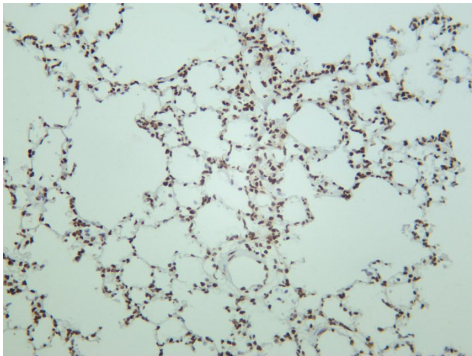
Lane 1: SH-SY5Y  
Lane 2: HepG2  
Lane 3: Mouse brain  
Lane 4: Rat brain  
Predicted band size: 52kDa  
Observed band size: 75kDa



Human kidney was stained with anti-MECP2 rabbit antibody



Mouse lung was stained with anti-MECP2 rabbit antibody



Rat lung was stained with anti-MECP2 rabbit antibody