

## Met Rabbit mAb (AR1500)

### Key Features

Host Species:	Rabbit
Reactivity:	Human, Mouse, Rat
Applications:	WB, IHC, IF, IP, ELISA
Isotype:	IgG, Kappa
MW:	156kD (Calculated) 170kD (Observed)

### Recommended Dilution Ratios

IHC:	1:200-1000
WB:	1:2000-10000
IF:	1:200-1000
ELISA:	1:5000-20000
IP:	1:50-200

### Storage

-15°C to -25°C/1 year (Do not lower than -25°C)

### Basic Information

Clonality	Monoclonal
-----------	------------

### Immunogen Information

Specificity	Endogenous
-------------	------------

### Target Information

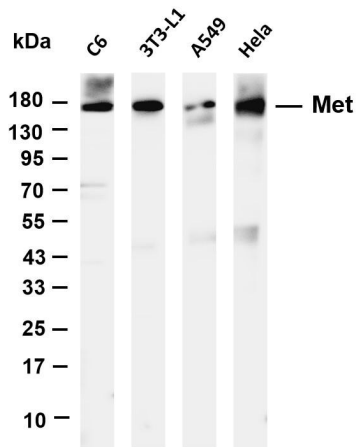
Gene name	MET
Protein Name	Hepatocyte growth factor receptor

Organism	Gene ID	UniProt ID
Human	4233	P08581
Mouse		P16056
Rat	24553	P97523

Cellular Localization	Secreted
Tissue specificity	Expressed in normal hepatocytes as well as in epithelial cells lining the stomach, the small and the large intestine. Found also in basal

keratinocytes of esophagus and skin. High levels are found in liver, gastrointestinal tract, thyroid and kidney. Also present in the brain. Expressed in metaphyseal bone (at protein level) (PubMed: 26637977).

## Validation Data



Various whole cell lysates were separated by 4-20% SDS-PAGE, and the membrane was blotted with anti-Met antibody. The HRP-conjugated Goat anti-Rabbit IgG(H + L) antibody was used to detect the antibody.

Lane 1: C6

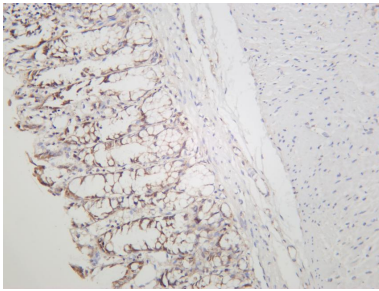
Lane 2: 3T3-L1

Lane 3: A549

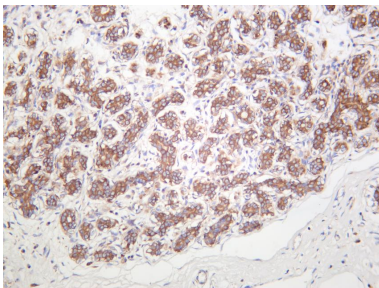
Lane 4: HeLa

Predicted band size: 156kDa

Observed band size: 170kDa



Rat colon was stained with anti-Met rabbit antibody



Human breast carcinoma was stained with anti-Met rabbit antibody

For Research Use Only