

## MFN1 Rabbit mAb (AR1501)

### Key Features

Host Species:	Rabbit
Reactivity:	Human, Mouse, Rat
Applications:	WB, IF, IP, ELISA
Isotype:	IgG, Kappa
MW:	84kD (Calculated) 84kD (Observed)

### Recommended Dilution Ratios

WB:	1:2000-10000
IF:	1:200-1000
ELISA:	1:5000-20000
IP:	1:50-200

### Storage

-15°C to -25°C/1 year (Do not lower than -25°C)

### Basic Information

Clonality	Monoclonal
-----------	------------

### Immunogen Information

Specificity	Endogenous
-------------	------------

### Target Information

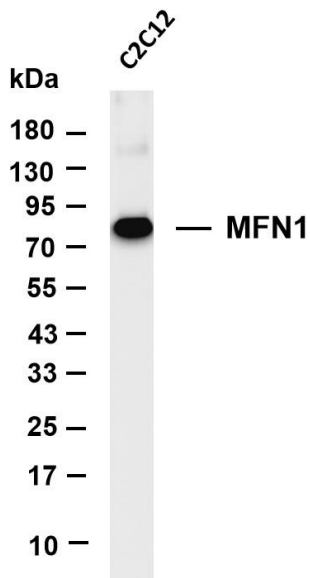
Gene name	MFN1
Protein Name	MFN1

Organism	Gene ID	UniProt ID
Human	55669	Q8IWA4
Mouse	67414	Q811U4
Rat	192647	Q8R4Z9

Cellular Localization	Mitochondrion outer membrane; Multi-pass membrane protein; [Isoform 2]: Cytoplasm.
Tissue specificity	Detected in kidney and heart (at protein level) (PubMed:12759376). Ubiquitous (PubMed:11950885, PubMed:12759376). Expressed at slightly higher level in kidney and heart (PubMed:12759376).

Isoform 2 may be overexpressed in some tumors, such as lung cancers (PubMed:11751411).

## Validation Data



Various whole cell lysates were separated by 4-20% SDS-PAGE, and the membrane was blotted with anti-MFN1 antibody. The HRP-conjugated Goat anti-Rabbit IgG(H + L) antibody was used to detect the antibody.

Lane 1: C2C12

Predicted band size: 84kDa

Observed band size: 84kDa

For Research Use Only