

MLKL Rabbit mAb (AR1502)

Key Features

Host Species:	Rabbit
Reactivity:	Human, Mouse, Rat
Applications:	WB, IHC, IF, IP, ELISA
Isotype:	IgG, Kappa
MW:	54kD (Calculated) 54kD (Observed)

Recommended Dilution Ratios

IHC:	1:1000-4000
WB:	1:2000-10000
IF:	1:200-1000
ELISA:	1:5000-20000
IP:	1:50-200

Storage

-15°C to -25°C/1 year (Do not lower than -25°C)

Basic Information

Clonality	Monoclonal
-----------	------------

Immunogen Information

Specificity	Endogenous
-------------	------------

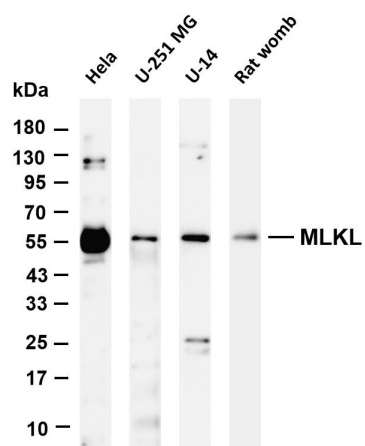
Target Information

Gene name	MLKL
Protein Name	Mixed lineage kinase domain-like protein

Organism	Gene ID	UniProt ID
Human	197259	Q8NB16
Mouse		Q9D2Y4

Cellular Localization	Cytoplasm
Tissue specificity	Chondrocyte, Leukocyte, Lymph node

Validation Data



Various whole cell lysates were separated by 4-20% SDS-PAGE, and the membrane was blotted with anti-MLKL antibody. The HRP-conjugated Goat anti-Rabbit IgG(H + L) antibody was used to detect the antibody.

Lane 1: Hela

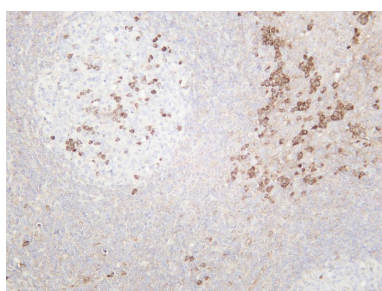
Lane 2: U-251 MG

Lane 3: U-14

Lane 4: Rat womb

Predicted band size: 54kDa

Observed band size: 54kDa



Human tonsil was stained with anti-MLKL rabbit antibody

For Research Use Only