

MMP2 Rabbit mAb (AR1503)

Key Features

Host Species:	Rabbit
Reactivity:	Human, Mouse, Rat
Applications:	WB, IF, IP, ELISA
Isotype:	IgG, Kappa
MW:	74kD (Calculated) 64kD (Observed)

Recommended Dilution Ratios

WB:	1:2000-10000
IF:	1:200-1000
ELISA:	1:5000-20000
IP:	1:50-200

Storage

-15°C to -25°C/1 year (Do not lower than -25°C)

Basic Information

Clonality	Monoclonal
-----------	------------

Immunogen Information

Specificity	Endogenous
-------------	------------

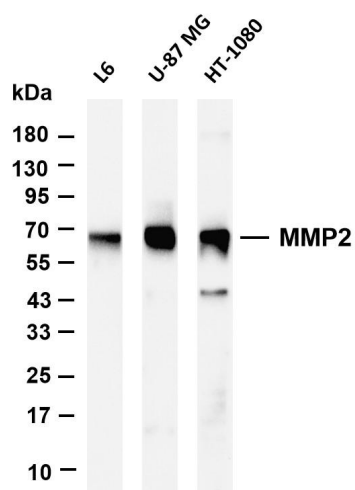
Target Information

Gene name	MMP2
Protein Name	72 kDa type IV collagenase

Organism	Gene ID	UniProt ID
Human	4313	P08253
Mouse	17390	P33434
Rat	81686	P33436

Cellular Localization	Cytoplasm, Nucleus
Tissue specificity	Produced by normal skin fibroblasts. PEX is expressed in a number of tumors including gliomas, breast and prostate.

Validation Data



Various whole cell lysates were separated by 4-20% SDS-PAGE, and the membrane was blotted with anti-MMP2 antibody. The HRP-conjugated Goat anti-Rabbit IgG(H + L) antibody was used to detect the antibody.

Lane 1: L6

Lane 2: U-87 MG

Lane 3: HT-1080

Predicted band size: 74kDa

Observed band size: 64kDa

For Research Use Only