

Myeloperoxidase Rabbit mAb (AR1504)

Key Features

Host Species:	Rabbit
Reactivity:	Human, Mouse, Rat
Applications:	WB, IHC, IF, IP, ELISA
Isotype:	IgG, Kappa
MW:	84kD (Calculated) 60kD, 80-90kD (Observed)

Recommended Dilution Ratios

IHC:	1:500-1000
WB:	1:2000-10000
IF:	1:200-1000
ELISA:	1:5000-20000
IP:	1:50-200

Storage

-15°C to -25°C/1 year (Do not lower than -25°C)

Basic Information

Clonality	Monoclonal
-----------	------------

Immunogen Information

Specificity	Endogenous
-------------	------------

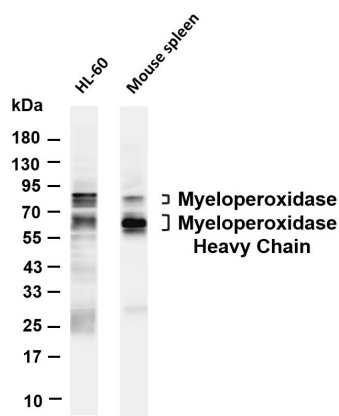
Target Information

Gene name	MPO
Protein Name	Myeloperoxidase(MPO)

Organism	Gene ID	UniProt ID
Human	4353	P05164

Cellular Localization	Cytoplasmic
Tissue specificity	Leukemia, Leukocyte, Liver, Plasma, Saliva

Validation Data



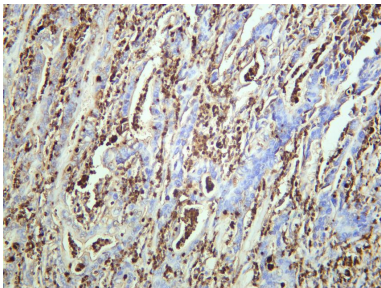
Various whole cell lysates were separated by 4-20% SDS-PAGE, and the membrane was blotted with anti-Myeloperoxidase antibody. The HRP conjugated Goat anti-Rabbit IgG(H + L) antibody was used to detect the antibody.

Lane 1: HL-60

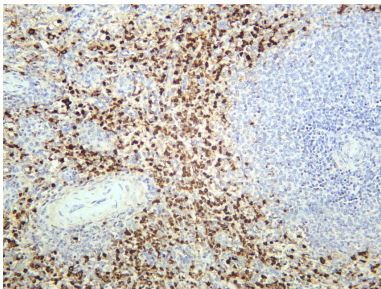
Lane 2: Mouse spleen

Predicted band size: 84kDa

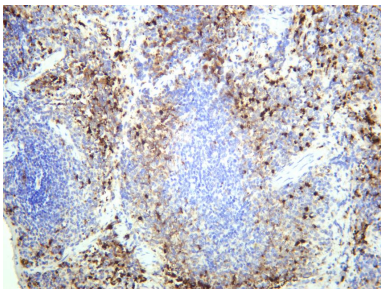
Observed band size: 60kDa, 80-90kDa



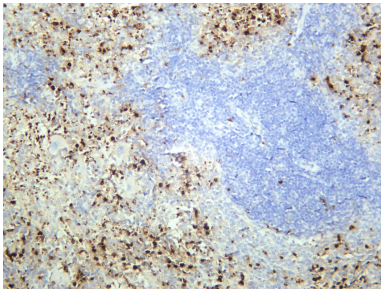
Human gastric carcinoma was stained with anti-Myeloperoxidase rabbit antibody



Human spleen was stained with anti-Myeloperoxidase rabbit antibody



Mouse spleen was stained with anti-Myeloperoxidase rabbit antibody



Rat spleen was stained with anti-Myeloperoxidase rabbit antibody