

MX1 Rabbit mAb (AR1505)

Key Features

Host Species:	Rabbit
Reactivity:	Human, Mouse, Rat
Applications:	WB, IHC, IF, IP, ELISA
Isotype:	IgG, Kappa
MW:	76kD (Calculated) 76kD (Observed)

Recommended Dilution Ratios

IHC:	1:200-1000
WB:	1:1000-5000
IF:	1:200-1000
ELISA:	1:5000-20000
IP:	1:50-200

Storage

-15°C to -25°C/1 year (Do not lower than -25°C)

Basic Information

Clonality	Monoclonal
-----------	------------

Immunogen Information

Specificity	Endogenous
-------------	------------

Target Information

Gene name	MX1
Protein Name	Interferon-induced GTP-binding protein Mx1 (Interferon-induced protein p78) (IFI-78K) (Interferon-regulated resistance GTP-binding protein MxA) (Myxoma resistance protein 1) (Myxovirus resistance protein 1) [Cleaved into: Interferon-induced GTP-binding protein Mx1, N-terminally processed]

Organism	Gene ID	UniProt ID
Human	4599	P20591
Mouse		P09922
Rat		P18588

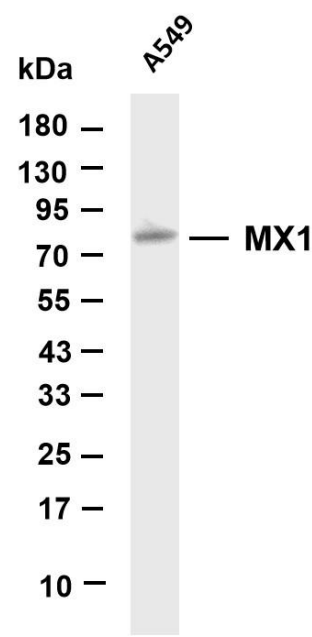
Cellular Localization

Cytoplasm. Endoplasmic reticulum membrane; Peripheral membrane protein; Cytoplasmic side. Cytoplasm, perinuclear region. Binds preferentially to negatively charged phospholipids (PubMed:21900240). Colocalizes with CCHFV protein N in the perinuclear region (PubMed:15047845); [Isoform 2]: Cytoplasm. Nucleus. Translocates into the nuclei of HSV-1 infected cells (PubMed:20603636).

Tissue specificity

Primary B-Cells, Spleen, Uterus

Validation Data

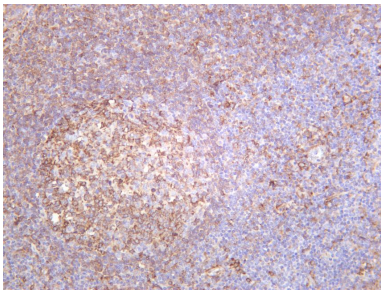


Various whole cell lysates were separated by 4-20% SDS-PAGE, and the membrane was blotted with anti-MX1 antibody. The HRP-conjugated Goat anti-Rabbit IgG(H + L) antibody was used to detect the antibody.

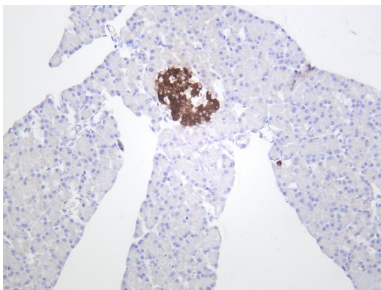
Lane 1: A549

Predicted band size: 76kDa

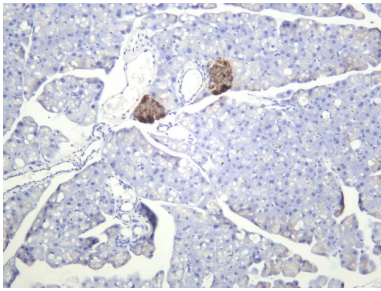
Observed band size: 76kDa



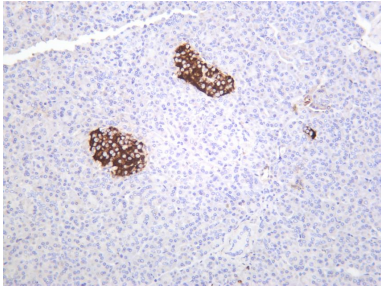
Human tonsil was stained with anti-MX1 rabbit antibody



Rat pancreas was stained with anti-MX1 rabbit antibody



Mouse pancreas was stained with anti-MX1 rabbit antibody



Human pancreas was stained with anti-MX1 rabbit antibody

For Research Use Only