

MYL9 Rabbit mAb (AR1506)

Key Features

Host Species:	Rabbit
Reactivity:	Human, Mouse, Rat
Applications:	WB, IHC, IF, IP, ELISA
Isotype:	IgG, Kappa
MW:	20kD (Calculated) 20kD (Observed)

Recommended Dilution Ratios

IHC:	1:200-1000
WB:	1:2000-10000
IF:	1:200-1000
ELISA:	1:5000-20000
IP:	1:50-200

Storage

-15°C to -25°C/1 year (Do not lower than -25°C)

Basic Information

Clonality	Monoclonal
-----------	------------

Immunogen Information

Specificity	Endogenous
-------------	------------

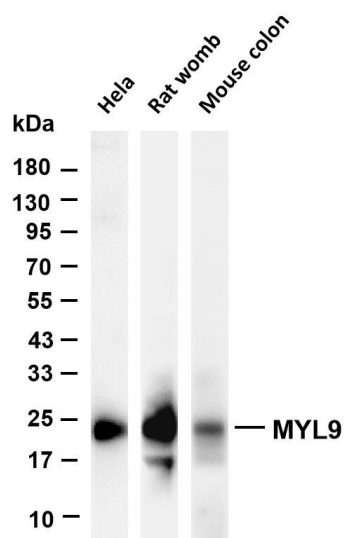
Target Information

Gene name	MYL9
Protein Name	Myosin regulatory light polypeptide 9

Organism	Gene ID	UniProt ID
Human	10398	P24844
Mouse	98932	Q9CQ19
Rat	296313	Q64122

Cellular Localization	Cytoplasm
Tissue specificity	Smooth muscle tissues and in some, but not all, nonmuscle cells.

Validation Data



Various whole cell lysates were separated by 4-20% SDS-PAGE, and the membrane was blotted with anti-MYL9 antibody. The HRP-conjugated Goat anti-Rabbit IgG(H + L) antibody was used to detect the antibody.

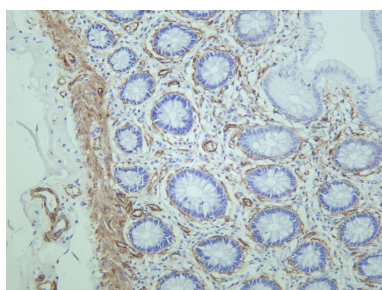
Lane 1: HeLa

Lane 2: Rat womb

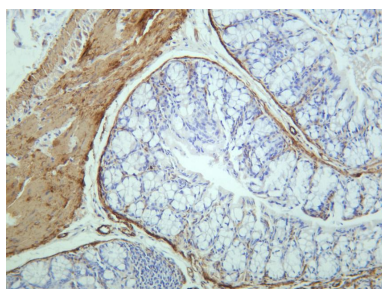
Lane 3: Mouse colon

Predicted band size: 20kDa

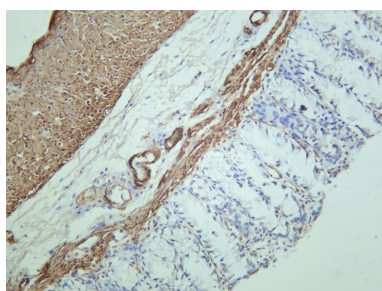
Observed band size: 20kDa



Human colon was stained with anti-MYL9 rabbit antibody



Mouse colon was stained with anti-MYL9 rabbit antibody



Rat colon was stained with anti-MYL9 rabbit antibody

For Research Use Only