

NBEAL2 Rabbit mAb (AR1508)

Key Features

Host Species:	Rabbit
Reactivity:	Human
Applications:	WB
Isotype:	IgG,Kappa
MW:	303kD (Calculated) 303kD (Observed)

Recommended Dilution Ratios

WB:	1:1000-5000
-----	-------------

Storage

-15°C to -25°C/1 year (Do not lower than -25°C)

Basic Information

Clonality	Monoclonal
-----------	------------

Immunogen Information

Specificity	Endogenous
-------------	------------

Target Information

Gene name	NBEAL2; KIAA0540; UNQ253/PRO290
-----------	---------------------------------

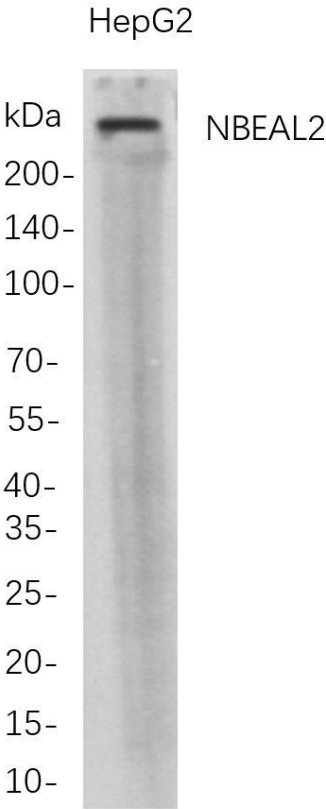
Protein Name	Neurobeachin-like protein 2
--------------	-----------------------------

Organism	Gene ID	UniProt ID
Human	23218	Q6ZNJ1

Cellular Localization	Endoplasmic reticulum.
-----------------------	------------------------

Tissue specificity	Expressed in megakaryocytes. {ECO:0000269 PubMed:21765411}.
--------------------	---

Validation Data



Western Blot analysis of HepG2 whole cell lysates were separated by 4-20% SDS-PAGE, and the membrane was blotted with anti-NBEAL2 rabbit mAb. The HRP-conjugated Goat anti-Rabbit IgG(H + L) antibody was used to detect the antibody.

Lane 1: HepG2
Predicted band size: 303kDa
Observed band size: 303kDa

For Research Use Only