

NDRG1 Rabbit mAb (AR1509)

Key Features

Host Species:	Rabbit
Reactivity:	Human,Mouse,Rat
Applications:	WB,IHC,IF,IP,ELISA
Isotype:	IgG,Kappa
MW:	43kD (Calculated) 48kD (Observed)

Recommended Dilution Ratios

IHC:	1:2000-10000
WB:	1:2000-10000
IF:	1:200-1000
ELISA:	1:5000-20000
IP:	1:50-200

Storage

-15°C to -25°C/1 year (Do not lower than -25°C)

Basic Information

Clonality	Monoclonal
-----------	------------

Immunogen Information

Specificity	Endogenous
-------------	------------

Target Information

Gene name	NDRG1 CAP43 DRG1 RTP
Protein Name	Protein NDRG1 (Differentiation-related gene 1 protein) (DRG-1) (N-myc downstream regulated gene 1 protein) (Nickel-specific induction protein Cap43) (Reducing agents and tunicamycin-responsive protein) (RTP) (Rit42)

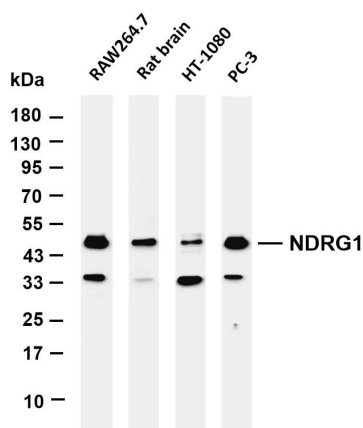
Organism	Gene ID	UniProt ID
Human	10397	Q92597
Mouse		Q62433
Rat		Q6JE36

Cellular Localization	Membrane, Cytoplasm
-----------------------	---------------------

Tissue specificity

Ubiquitous; expressed most prominently in placental membranes and prostate, kidney, small intestine, and ovary tissues. Also expressed in heart, brain, skeletal muscle, lung, liver and pancreas. Low levels in peripheral blood leukocytes and in tissues of the immune system. Expressed mainly in epithelial cells. Also found in Schwann cells of peripheral neurons. Reduced expression in adenocarcinomas compared to normal tissues. In colon, prostate and placental membranes, the cells that border the lumen show the highest expression.

Validation Data



Various whole cell lysates were separated by 4-20% SDS-PAGE, and the membrane was blotted with anti-NDRG1 antibody. The HRP-conjugated Goat anti-Rabbit IgG(H + L) antibody was used to detect the antibody.

Lane 1: RAW264.7

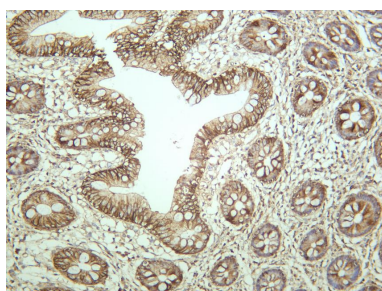
Lane 2: Rat brain

Lane 3: HT-1080

Lane 4: PC-3

Predicted band size: 43kDa

Observed band size: 48kDa



Human colon was stained with anti-NDRG1 rabbit antibody

For Research Use Only