

NDUFA1 Rabbit mAb (AR1510)

Key Features

Host Species:	Rabbit
Reactivity:	Human
Applications:	WB,IHC,IP
Isotype:	IgG,Kappa
MW:	8kD (Calculated) 8kD (Observed)

Recommended Dilution Ratios

IHC:	1:100-300
WB:	1:1000-5000
IP:	1:50-100

Storage

-15°C to -25°C/1 year (Do not lower than -25°C)

Basic Information

Clonality	Monoclonal
-----------	------------

Immunogen Information

Specificity	Endogenous
-------------	------------

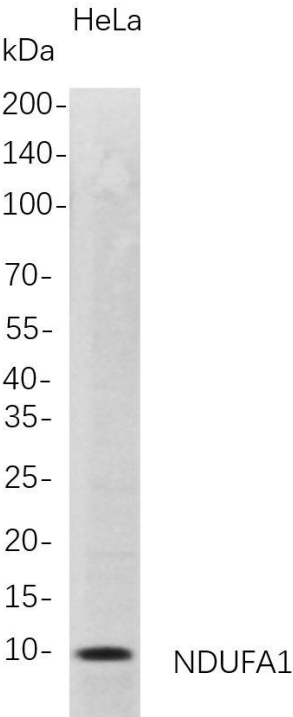
Target Information

Gene name	NDUFA1
Protein Name	NADH dehydrogenase [ubiquinone] 1 alpha subcomplex subunit 1; Complex I-MWFE; CIMWFE; NADH-ubiquinone oxidoreductase MWFE subunit

Organism	Gene ID	UniProt ID
Human	4694	O15239

Cellular Localization	Mitochondrion inner membrane; Single-pass membrane protein; Matrix side.
Tissue specificity	Primarily expressed in heart and skeletal muscle.

Validation Data



Western Blot analysis of HeLa whole cell lysates were separated by 4-20% SDS-PAGE, and the membrane was blotted with anti-NDUFA1 rabbit mAb. The HRP-conjugated Goat anti-Rabbit IgG(H + L) antibody was used to detect the antibody.

Lane 1: HeLa
Predicted band size: 8kDa
Observed band size: 8kDa

For Research Use Only