

NeuN Rabbit mAb (AR1511)

Key Features

Host Species:	Rabbit
Reactivity:	Human, Mouse, Rat
Applications:	WB, IHC, IF, IP, ELISA
Isotype:	IgG, Kappa
MW:	34kD (Calculated) 46-55kD (Observed)

Recommended Dilution Ratios

IHC:	1:1000-4000
WB:	1:2000-10000
IF:	1:200-1000
ELISA:	1:5000-20000
IP:	1:50-200

Storage

-15°C to -25°C/1 year (Do not lower than -25°C)

Basic Information

Clonality	Monoclonal
-----------	------------

Immunogen Information

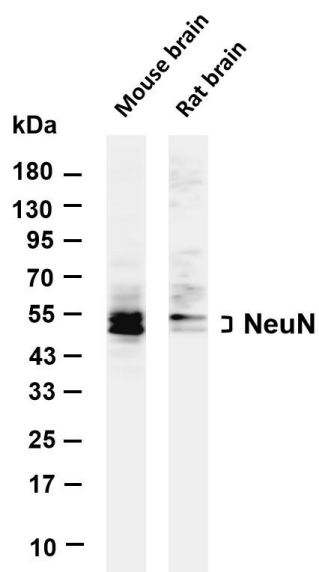
Specificity	Endogenous
-------------	------------

Target Information

Gene name	RBFOX3
Protein Name	NeuN Neuronal Marker

	Organism	Gene ID	UniProt ID
	Human	146713	A6NFN3
	Mouse	52897	Q8BIF2
Cellular Localization	Nucleus. Cytoplasm. Largely restricted to neuronal nuclei. However, significant cytoplasmic localization in neurons from brains from HIV-infected individuals with cognitive impairment. .		

Validation Data



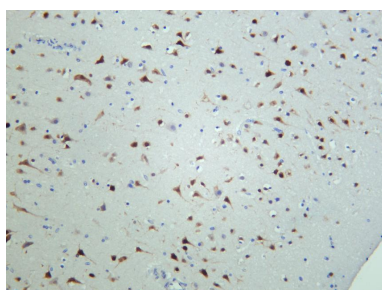
Various whole cell lysates were separated by 4-20% SDS-PAGE, and the membrane was blotted with anti-NeuN antibody. The HRP-conjugated Goat anti-Rabbit IgG(H + L) antibody was used to detect the antibody.

Lane 1: Mouse brain

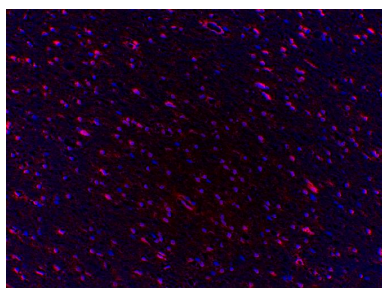
Lane 2: Rat brain

Predicted band size: 34kDa

Observed band size: 46-55kDa



Human cerebellum was stained with anti-NeuN rabbit antibody



Immunofluorescence analysis of Human brain

For Research Use Only