

NFκB-p100 Rabbit mAb (AR1512)

Key Features

Host Species:	Rabbit
Reactivity:	Human,Mouse,Rat
Applications:	WB,IF,IP,ELISA
Isotype:	IgG,Kappa
MW:	97kD (Calculated) 120kD (Observed)

Recommended Dilution Ratios

WB:	1:2000-10000
IF:	1:200-1000
ELISA:	1:5000-20000
IP:	1:50-200

Storage

-15°C to -25°C/1 year (Do not lower than -25°C)

Basic Information

Clonality	Monoclonal
-----------	------------

Immunogen Information

Specificity	Endogenous
-------------	------------

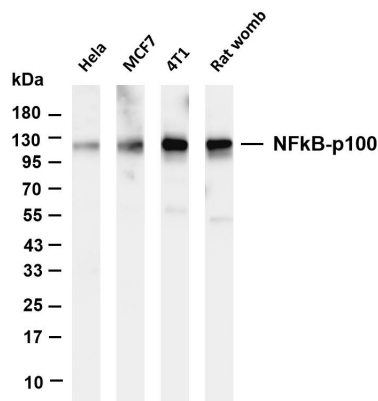
Target Information

Gene name	NFKB2
Protein Name	Nuclear factor NF-kappa-B p100 subunit

Organism	Gene ID	UniProt ID
Human	4791	Q00653
Mouse	18034	Q9WTK5

Cellular Localization	Cytoplasm, Nucleus
Tissue specificity	Leukemia, Lymph, Thymus

Validation Data



Various whole cell lysates were separated by 4-20% SDS-PAGE, and the membrane was blotted with anti-NFkB p100 antibody. The HRP-conjugated Goat anti-Rabbit IgG(H + L) antibody was used to detect the antibody.

Lane 1: HeLa

Lane 2: MCF7

Lane 3: 4T1

Lane 4: Rat womb

Predicted band size: 97kDa

Observed band size: 120kDa

For Research Use Only