

iNOS Rabbit mAb (AR1513)

Key Features

Host Species:	Rabbit
Reactivity:	Human,Mouse,Rat
Applications:	WB,IF,IP,ELISA
Isotype:	IgG,Kappa
MW:	131kD (Calculated) 131kD (Observed)

Recommended Dilution Ratios

WB:	1:2000-10000
IF:	1:200-1000
ELISA:	1:5000-20000
IP:	1:50-200

Storage

-15°C to -25°C/1 year (Do not lower than -25°C)

Basic Information

Clonality	Monoclonal
-----------	------------

Immunogen Information

Specificity	Endogenous
-------------	------------

Target Information

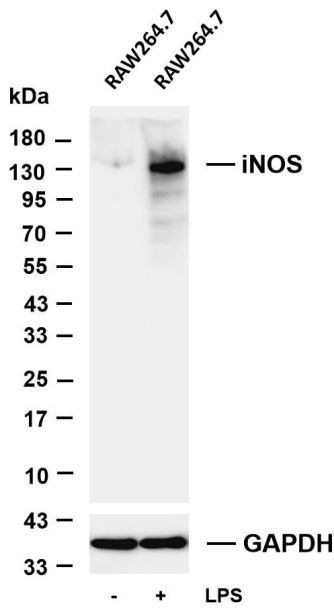
Gene name	NOS2, INOS
Protein Name	Nitric oxide synthase inducible

Organism	Gene ID	UniProt ID
Human	4843	P35228
Mouse	18126	P29477
Rat	24599	Q06518

Cellular Localization	Cytoplasm, cytosol. Localizes as discrete foci scattered throughout the cytosol and in the presence of SPSB1 and SPSB4, exhibits a more diffuse cytosolic localization
Tissue specificity	Expressed in the liver, retina, bone cells and airway epithelial cells of the lung. Not expressed in the platelets. Expressed in

chondrocytes (PubMed:7504305).

Validation Data



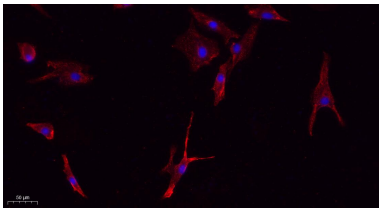
Various whole cell lysates were separated by 4-20% SDS-PAGE, and the membrane was blotted with anti-iNOS antibody. The HRP-conjugated Goat anti-Rabbit IgG (H + L) antibody was used to detect the antibody.

Lane 1: RAW264.7

Lane 2: RAW264.7 treated overnight with 1 μ g/ml LPS

Predicted band size: 131kDa

Observed band size: 131kDa



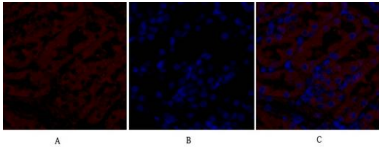
Immunofluorescence analysis of A549.

1. primary Antibody(red) was diluted at 1:200(4°C overnight).
2. Goat Anti Rabbit IgG (H&L) - Alexa Fluor 594 Secondary antibody was diluted at 1:1000(room temperature, 50min).
3. DAPI (blue) 10min.

Immunofluorescence analysis of rat-kidney tissue.

1. NOS2 Monoclonal Antibody(red) was diluted at 1:200(4°C, overnight).
2. Cy3 labeled Secondary antibody was diluted at 1:300(room temperature, 50min).
3. DAPI (blue) 10min.

Picture A: Target. Picture B: DAPI. Picture C: merge of A+B



For Research Use Only