

## Nrf1 Rabbit mAb (AR1514)

### Key Features

Host Species:	Rabbit
Reactivity:	Human,Mouse,Rat
Applications:	WB,IHC,IF,IP,ELISA
Isotype:	IgG,Kappa
MW:	54kD (Calculated) 68kD (Observed)

### Recommended Dilution Ratios

IHC:	1:200-1000
WB:	1:2000-10000
IF:	1:200-1000
ELISA:	1:5000-20000
IP:	1:50-200

### Storage

-15°C to -25°C/1 year (Do not lower than -25°C)

### Basic Information

Clonality	Monoclonal
-----------	------------

### Immunogen Information

Specificity	Endogenous
-------------	------------

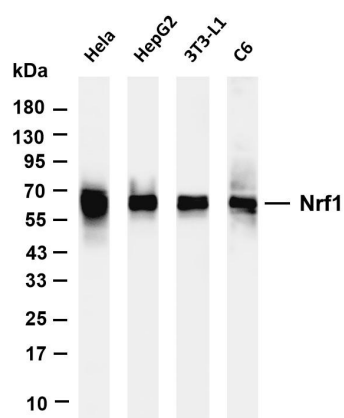
### Target Information

Gene name	NRF1
Protein Name	Nuclear respiratory factor 1

Organism	Gene ID	UniProt ID
Human	4899	Q16656
Mouse	18181	Q9WU00
Rat		Q62792

Cellular Localization	Nucleus
Tissue specificity	Ubiquitously expressed with strongest expression in skeletal muscle

## Validation Data



Various whole cell lysates were separated by 4-20% SDS-PAGE, and the membrane was blotted with anti-Nrf1 antibody. The HRP-conjugated Goat anti-Rabbit IgG(H + L) antibody was used to detect the antibody.

Lane 1: HeLa

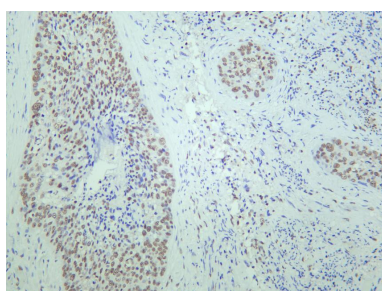
Lane 2: HepG2

Lane 3: 3T3-L1

Lane 4: C6

Predicted band size: 54kDa

Observed band size: 68kDa



Human cervicalcarcinoma was stained with anti-Nrf1 rabbit antibody

For Research Use Only