

Nrf2 Rabbit mAb (AR1515)

Key Features

Host Species:	Rabbit
Reactivity:	Human,Mouse,Rat
Applications:	WB,IHC,IF,IP,ELISA
Isotype:	IgG,Kappa
MW:	68kD (Calculated) 100kD (Observed)

Recommended Dilution Ratios

IHC:	1:1000-5000
WB:	1:2000-10000
IF:	1:200-1000
ELISA:	1:5000-20000
IP:	1:50-200

Storage

-15°C to -25°C/1 year (Do not lower than -25°C)

Basic Information

Clonality	Monoclonal
-----------	------------

Immunogen Information

Specificity	Endogenous
-------------	------------

Target Information

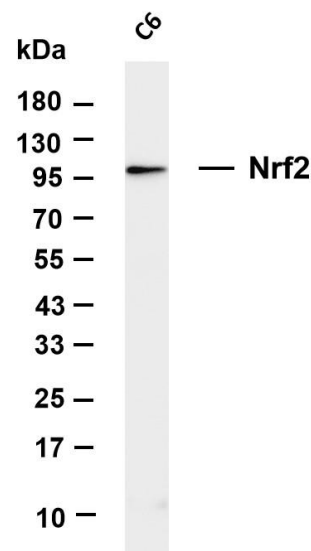
Gene name	NFE2L2 NRF2
Protein Name	Nuclear factor erythroid 2-related factor 2 (NF-E2-related factor 2) (NFE2-related factor 2) (HEBP1) (Nuclear factor, erythroid derived 2, like 2)

	Organism	Gene ID	UniProt ID
	Human	4780	Q16236
	Mouse	18024	Q60795
	Rat	83619	O54968
Cellular Localization	Cytoplasmic, Nuclear		

Tissue specificity

Widely expressed. Highest expression in adult muscle, kidney, lung, liver and in fetal muscle.

Validation Data

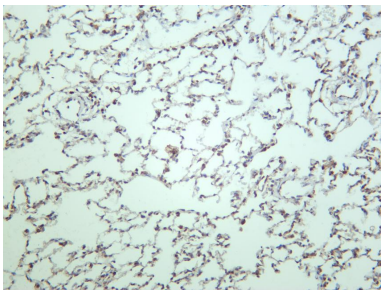


Various whole cell lysates were separated by 4-20% SDS-PAGE, and the membrane was blotted with anti-Nrf2 antibody. The HRP-conjugated Goat anti-Rabbit IgG(H + L) antibody was used to detect the antibody.

Lane 1: C6

Predicted band size: 68kDa

Observed band size: 100kDa



Rat lung was stained with anti-Nrf2 rabbit antibody

For Research Use Only