

## NUP62CL Rabbit mAb (AR1516)

### Key Features

Host Species:	Rabbit
Reactivity:	Human
Applications:	WB,IF,ICC,Flow Cyt,IP
Isotype:	IgG,Kappa
MW:	21kD (Calculated) 21kD (Observed)

### Recommended Dilution Ratios

WB:	1:1000-5000
ICC/IF:	1:100-300
FC:	1:100-300
IP:	1:50-100

### Storage

-15°C to -25°C/1 year (Do not lower than -25°C)

### Basic Information

Clonality	Monoclonal
-----------	------------

### Immunogen Information

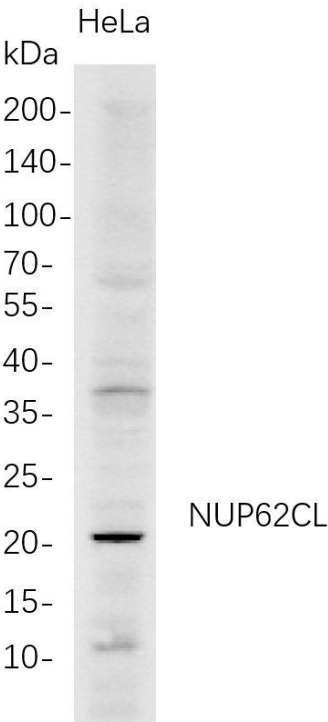
Specificity	Endogenous
-------------	------------

### Target Information

Gene name	NUP62CL; NUP62L
Protein Name	Nucleoporin-62 C-terminal-like protein

Organism	Gene ID	UniProt ID
Human	54830	Q9H1M0

Validation Data



Western Blot analysis of HeLa whole cell lysates were separated by 4-20% SDS-PAGE, and the membrane was blotted with anti-NUP62CL rabbit mAb. The HRP-conjugated Goat anti-Rabbit IgG(H + L) antibody was used to detect the antibody.

Lane 1: 21kDa  
Predicted band size: 21kDa  
Observed band size: 21kDa

For Research Use Only