

PACSIN3 Rabbit mAb (AR1518)

Key Features

| | |
|---------------|--------------------------------------|
| Host Species: | Rabbit |
| Reactivity: | Human |
| Applications: | WB,IHC,IF,ICC,Flow Cyt,IP |
| Isotype: | IgG,Kappa |
| MW: | 48kD (Calculated) 48kD (Observed) |

Recommended Dilution Ratios

| | |
|---------|-------------|
| IHC: | 1:100-300 |
| WB: | 1:1000-5000 |
| ICC/IF: | 1:100-300 |
| FC: | 1:100-300 |
| IP: | 1:50-100 |

Storage

-15°C to -25°C/1 year (Do not lower than -25°C)

Basic Information

| | |
|-----------|------------|
| Clonality | Monoclonal |
|-----------|------------|

Immunogen Information

| | |
|-------------|------------|
| Specificity | Endogenous |
|-------------|------------|

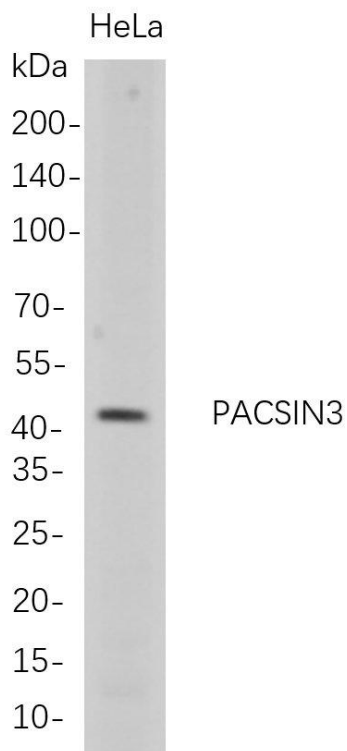
Target Information

| | |
|--------------|---|
| Gene name | PACSIN3 |
| Protein Name | Protein kinase C and casein kinase substrate in neurons protein 3; SH3 domain-containing protein 6511 |

| | Organism | Gene ID | UniProt ID |
|-----------------------|--|---------|------------|
| | Human | 29763 | Q9UKS6 |
| | Mouse | 80708 | Q99JB8 |
| Cellular Localization | Cytoplasm. Cell membrane; Peripheral membrane protein; Cytoplasmic side. Note=Detected at the inner aspect of the plasma membrane in myotubes. | | |
| Tissue specificity | Widely expressed, with highest levels in heart and skeletal muscle, | | |

intermediate levels in placenta, liver and pancreas, and very low levels in brain, lung and kidney. {ECO:0000269|PubMed:11082044, ECO:0000269|PubMed:11179684}.

Validation Data



Western Blot analysis of HeLa whole cell lysates were separated by 4-20% SDS-PAGE, and the membrane was blotted with anti-PACSIN3 rabbit mAb. The HRP-conjugated Goat anti-Rabbit IgG(H + L) antibody was used to detect the antibody.

Lane 1: HeLa

Predicted band size: 48kDa

Observed band size: 48kDa

For Research Use Only