

Parkin Rabbit mAb (AR1519)

Key Features

Host Species:	Rabbit
Reactivity:	Human,Mouse,Rat
Applications:	WB,IF,IP,ELISA
Isotype:	IgG,Kappa
MW:	52kD (Calculated) 52kD (Observed)

Recommended Dilution Ratios

WB:	1:2000-10000
IF:	1:200-1000
ELISA:	1:5000-20000
IP:	1:50-200

Storage

-15°C to -25°C/1 year (Do not lower than -25°C)

Basic Information

Clonality	Monoclonal
-----------	------------

Immunogen Information

Specificity	Endogenous
-------------	------------

Target Information

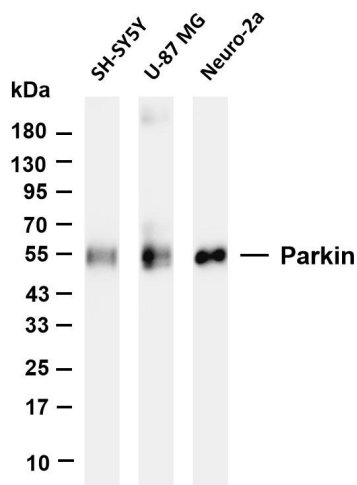
Gene name	PARK2
Protein Name	E3 ubiquitin-protein ligase parkin

Organism	Gene ID	UniProt ID
Human	5071	O60260
Mouse		Q9WVS6

Cellular Localization	Cytoplasm
Tissue specificity	Highly expressed in the brain including the substantia nigra (PubMed:9560156, PubMed:19501131). Expressed in heart, testis and skeletal muscle (PubMed:9560156). Expression is down-regulated or absent in tumor biopsies, and absent in the brain of PARK2 patients (PubMed:14614460, PubMed:12719539).

Overexpression protects dopamine neurons from kainate-mediated apoptosis (PubMed:12628165).
Found in serum (at protein level) (PubMed:19501131).

Validation Data



Various whole cell lysates were separated by 4-20% SDS-PAGE, and the membrane was blotted with anti-Parkin antibody. The HRP-conjugated Goat anti-Rabbit IgG(H + L) antibody was used to detect the antibody.

Lane 1: SH-SY5Y

Lane 2: U-87 MG

Lane 3: Neuro-2a

Predicted band size: 52kDa

Observed band size: 52kDa

For Research Use Only