

PAX6 Rabbit mAb (AR1520)

Key Features

| | |
|---------------|--------------------------------------|
| Host Species: | Rabbit |
| Reactivity: | Human, Mouse |
| Applications: | WB, IHC, IF, IP, ELISA |
| Isotype: | IgG, Kappa |
| MW: | 47kD (Calculated) 47kD (Observed) |

Recommended Dilution Ratios

| | |
|--------|--------------|
| IHC: | 1:200-1000 |
| WB: | 1:2000-10000 |
| IF: | 1:200-1000 |
| ELISA: | 1:5000-20000 |
| IP: | 1:50-200 |

Storage

-15°C to -25°C/1 year (Do not lower than -25°C)

Basic Information

| | |
|-----------|------------|
| Clonality | Monoclonal |
|-----------|------------|

Immunogen Information

| | |
|-------------|------------|
| Specificity | Endogenous |
|-------------|------------|

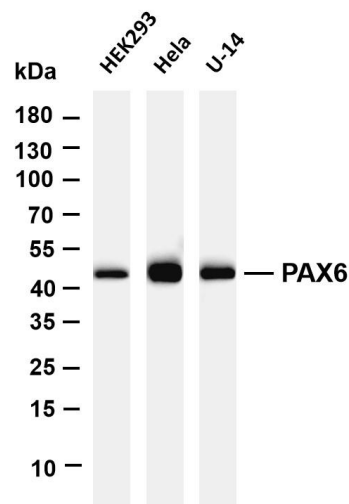
Target Information

| | |
|--------------|----------|
| Gene name | PAX6 AN2 |
| Protein Name | PAX6 |

| Organism | Gene ID | UniProt ID |
|----------|---------|------------|
| Human | 5080 | P26367 |
| Mouse | 18508 | P63015 |
| Rat | 25509 | P63016 |

| | |
|-----------------------|---|
| Cellular Localization | Nucleus |
| Tissue specificity | [Isoform 1]: Expressed in lymphoblasts; [Isoform 5a]: Weakly expressed in lymphoblasts. |

Validation Data



Various whole cell lysates were separated by 4-20% SDS-PAGE, and the membrane was blotted with anti-PAX6 antibody. The HRP-conjugated Goat anti-Rabbit IgG(H + L) antibody was used to detect the antibody.

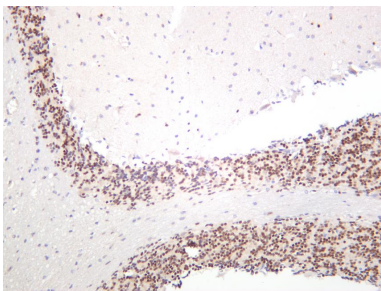
Lane 1: HEK293

Lane 2: HeLa

Lane 3: U-14

Predicted band size: 47kDa

Observed band size: 47kDa



Mouse brain was stained with anti-PAX6 rabbit antibody

For Research Use Only