

PDPK1 Rabbit mAb (AR1521)

Key Features

Host Species:	Rabbit
Reactivity:	Human, Mouse, Rat
Applications:	WB, IHC, IF, IP, ELISA
Isotype:	IgG, Kappa
MW:	63kD (Calculated) 58-68kD (Observed)

Recommended Dilution Ratios

IHC:	1:200-1000
WB:	1:2000-10000
IF:	1:200-1000
ELISA:	1:5000-20000
IP:	1:50-200

Storage

-15°C to -25°C/1 year (Do not lower than -25°C)

Basic Information

Clonality	Monoclonal
-----------	------------

Immunogen Information

Specificity	Endogenous
-------------	------------

Target Information

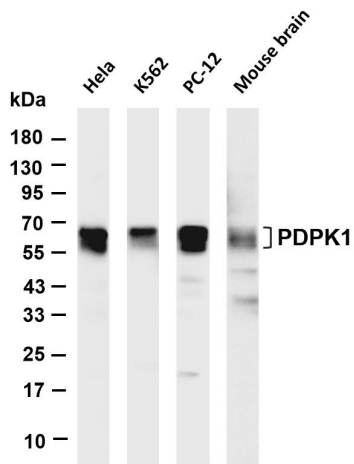
Gene name	PDPK1
Protein Name	3-phosphoinositide-dependent protein kinase 1

Organism	Gene ID	UniProt ID
Human	5170	O15530
Mouse	18607	Q9Z2A0
Rat	81745	O55173

Cellular Localization	Membrane, Cytoplasm
Tissue specificity	Appears to be expressed ubiquitously. The Tyr-9 phosphorylated form is markedly increased in diseased tissue compared with

normal tissue from lung, liver, colon and breast.

Validation Data



Various whole cell lysates were separated by 4-20% SDS-PAGE, and the membrane was blotted with anti-PDPK1 antibody. The HRP-conjugated Goat anti-Rabbit IgG(H + L) antibody was used to detect the antibody.

Lane 1: HeLa

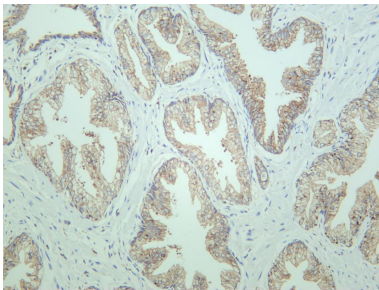
Lane 2: K562

Lane 3: PC-12

Lane 4: Mouse brain

Predicted band size: 63kDa

Observed band size: 58-68kDa



Human prostate carcinoma was stained with anti-PDPK1 rabbit antibody

For Research Use Only