

Map17 Rabbit mAb (AR1522)

Key Features

Host Species:	Rabbit
Reactivity:	Human
Applications:	WB,IP
Isotype:	IgG,Kappa
MW:	12kD (Calculated) 12kD (Observed)

Recommended Dilution Ratios

WB:	1:1000-5000
IP:	1:50-100

Storage

-15°C to -25°C/1 year (Do not lower than -25°C)

Basic Information

Clonality	Monoclonal
-----------	------------

Immunogen Information

Specificity	Endogenous
-------------	------------

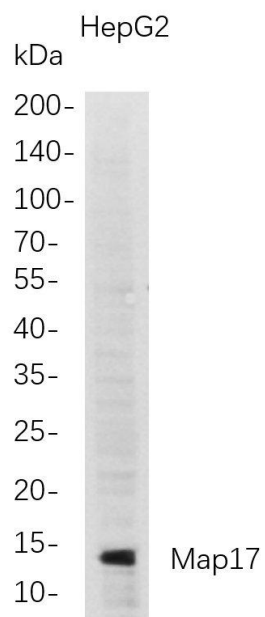
Target Information

Gene name	PDZK1IP1; MAP17
Protein Name	PDZK1-interacting protein 1; 17kDa membrane-associated protein; Protein DD96

Organism	Gene ID	UniProt ID
Human	10158	Q13113

Cellular Localization	Apical cell membrane; Single-pass membrane protein.
-----------------------	---

Validation Data



Western Blot analysis of HepG2 whole cell lysates were separated by 4-20% SDS-PAGE, and the membrane was blotted with anti-Map17 rabbit mAb. The HRP-conjugated Goat anti-Rabbit IgG(H + L) antibody was used to detect the antibody.

Lane 1: HepG2

Predicted band size: 12kDa

Observed band size: 12kDa

For Research Use Only