

Perforin Rabbit mAb (AR1523)

Key Features

Host Species:	Rabbit
Reactivity:	Human
Applications:	IHC, WB, ELISA
Isotype:	IgG, Kappa
MW:	61kD (Calculated) 61kD (Observed)

Recommended Dilution Ratios

IHC:	1:100-500
WB:	1:500-1000
ELISA:	1:5000-20000

Storage

-15°C to -25°C/1 year (Do not lower than -25°C)

Basic Information

Clonality	Monoclonal
-----------	------------

Immunogen Information

Specificity	This antibody detects endogenous levels of Perforin
-------------	---

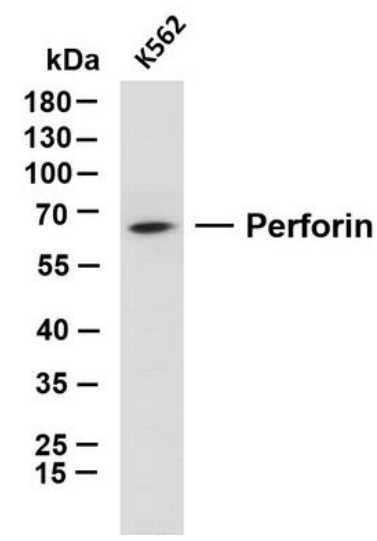
Target Information

Gene name	PRF1
Protein Name	Cytolysin; FLH2; HPLH2; Lymphocyte pore-forming protein; P1; PERF_HUMAN; perforin 1 (pore forming protein); Perforin 1; Perforin-1; PFP; PGFL; PIGF; PIGF-2; PLGF; Pore forming protein; prf1; SHGC-10760

Organism	Gene ID	UniProt ID
Human	5551	P14222
Mouse		P10820
Rat		P35763

Cellular Localization	Cytoplasmic, Membranous
Tissue specificity	Spleen

Validation Data

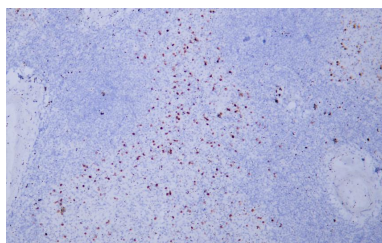


K562 whole cell lysates were separated by 10% SDS-PAGE, and the membrane was blotted with anti-Perforin rabbit antibody. The HRP-conjugated Goat anti-Rabbit IgG(H + L) antibody was used to detect the antibody.

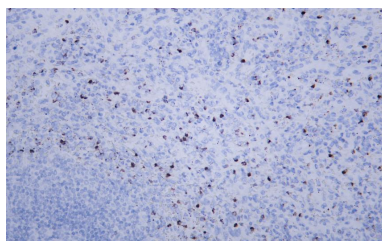
Lane 1: K562

Predicted band size: 61kDa

Observed band size: 61kDa



Human spleen tissue was stained with anti-Perforin rabbit Antibody



Human spleen tissue was stained with anti-Perforin rabbit Antibody

For Research Use Only