

PI3 Kinase Class 3 Rabbit mAb (AR1525)

Key Features

Host Species:	Rabbit
Reactivity:	Human, Mouse, Rat
Applications:	WB, IHC, IF, IP, ELISA
Isotype:	IgG, Kappa
MW:	102kD (Calculated) 102kD (Observed)

Recommended Dilution Ratios

IHC:	1:200-1000
WB:	1:2000-10000
IF:	1:200-1000
ELISA:	1:5000-20000
IP:	1:50-200

Storage

-15°C to -25°C/1 year (Do not lower than -25°C)

Basic Information

Clonality	Monoclonal
-----------	------------

Immunogen Information

Specificity	Endogenous
-------------	------------

Target Information

Gene name	PIK3C3 VPS34
Protein Name	PI 3 Kinase Class 3

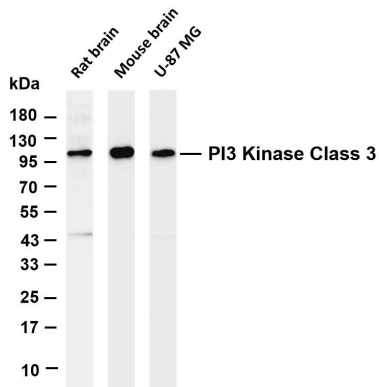
Organism	Gene ID	UniProt ID
Human	5289	Q8NEB9
Mouse	225326	Q6PF93
Rat		O88763

Cellular Localization	Midbody. Late endosome. Cytoplasmic vesicle, autophagosome. As component of the PI3K complex I localized to pre-autophagosome structures. As component of the PI3K complex II
-----------------------	---

localized predominantly to endosomes (PubMed:14617358). Localizes also to discrete punctae along the ciliary axoneme and to the base of the ciliary axoneme (By similarity). Ubiquitously expressed, with a highest expression in skeletal muscle.

Tissue specificity

Validation Data



Various whole cell lysates were separated by 4-20% SDS-PAGE, and the membrane was blotted with anti- PI3 Kinase Class 3 rabbit mAb. The HRP-conjugated Goat anti-Rabbit IgG(H + L) antibody was used to detect the antibody.

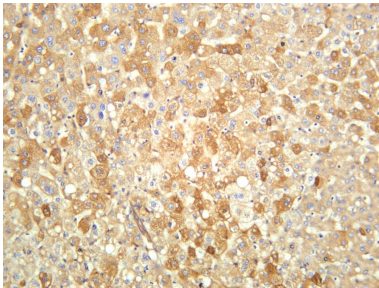
Lane 1: Rat brain

Lane 2: Mouse brain

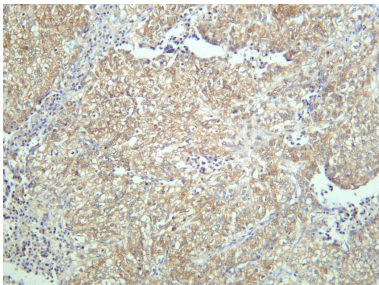
Lane 3: U-87 MG

Predicted band size: 102kDa

Observed band size: 102kDa



Human liver was stained with anti-PI3 Kinase Class 3 rabbit antibody



Human gastric adenocarcinoma was stained with anti-PI3 Kinase Class 3 rabbit antibody

For Research Use Only