

## PI3-Kinase p110 $\beta$ Rabbit mAb (AR1527)

### Key Features

Host Species:	Rabbit
Reactivity:	Human, Mouse, Rat
Applications:	WB, IHC, IF, IP, ELISA
Isotype:	IgG, Kappa
MW:	123kD (Calculated) 110kD (Observed)

### Recommended Dilution Ratios

IHC:	1:200-1000
WB:	1:2000-10000
IF:	1:200-1000
ELISA:	1:5000-20000
IP:	1:50-200

### Storage

-15°C to -25°C/1 year (Do not lower than -25°C)

### Basic Information

Clonality	Monoclonal
-----------	------------

### Immunogen Information

Specificity	Endogenous
-------------	------------

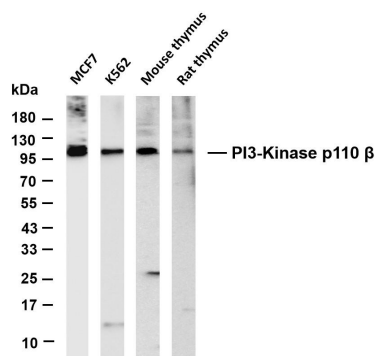
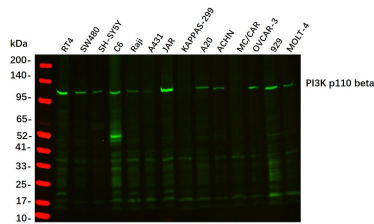
### Target Information

Gene name	PIK3CB PIK3C1
Protein Name	Phosphatidylinositol 4,5-bisphosphate 3-kinase catalytic subunit beta isoform (PI3-kinase subunit beta) (PI3K-beta) (PI3Kbeta) (PtdIns-3-kinase subunit beta) (Phosphatidylinositol 4,5-bisphosphate 3-kinase 110 kDa catalytic subunit beta) (PtdIns-3-kinase subunit p110- beta) (p110beta)

Organism	Gene ID	UniProt ID
Human	5291	P42338
Mouse		Q8BTI9
Rat		Q9Z1L0

## Tissue specificity

Expressed ubiquitously.



Observed band size: 110kDa