

PKC α Rabbit mAb (AR1528)

Key Features

Host Species:	Rabbit
Reactivity:	Human, Mouse, Rat
Applications:	WB, IHC, IF, IP, ELISA
Isotype:	IgG, Kappa
MW:	77kD (Calculated) 77kD (Observed)

Recommended Dilution Ratios

IHC:	1:500-1000
WB:	1:2000-10000
IF:	1:200-1000
ELISA:	1:5000-20000
IP:	1:50-200

Storage

-15°C to -25°C/1 year (Do not lower than -25°C)

Basic Information

Clonality	Monoclonal
-----------	------------

Immunogen Information

Specificity	Endogenous
-------------	------------

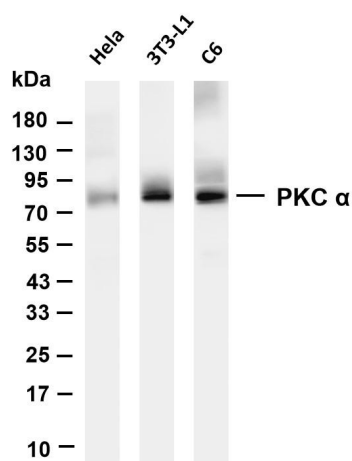
Target Information

Gene name	PRKCA
Protein Name	Protein kinase C alpha type

Organism	Gene ID	UniProt ID
Human	5578	P17252
Mouse	18750	P20444
Rat		P05696

Cellular Localization	Membrane, Cytoplasm
Tissue specificity	Blood, Brain, Epithelium, Lung, Platelet

Validation Data



Various whole cell lysates were separated by 4-20% SDS-PAGE, and the membrane was blotted with anti-PKC α antibody. The HRP-conjugated Goat anti-Rabbit IgG(H + L) antibody was used to detect the antibody.

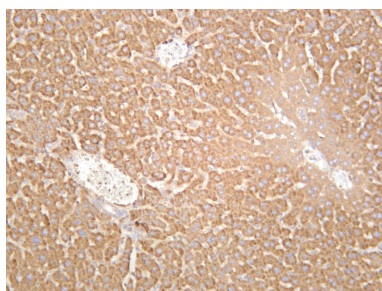
Lane 1: HeLa

Lane 2: 3T3-L1

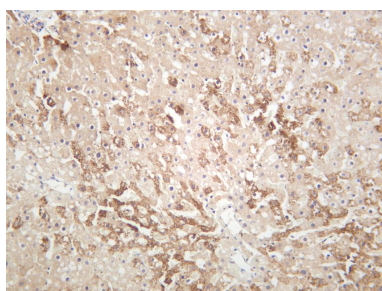
Lane 3: C6

Predicted band size: 77kDa

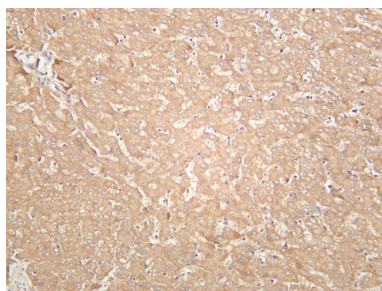
Observed band size: 77kDa



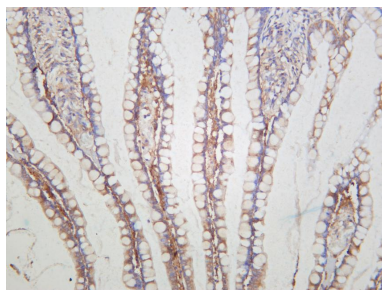
Mouse liver was stained with anti-PKC α rabbit antibody



Rat liver was stained with anti-PKC α rabbit antibody



Human liver was stained with anti-PKC α rabbit antibody



Human small intestine was stained with anti-PKC α rabbit antibody