

## PKR Rabbit mAb (AR1529)

### Key Features

Host Species:	Rabbit
Reactivity:	Human, Mouse, Rat
Applications:	WB, IHC, IF, IP, ELISA
Isotype:	IgG, Kappa
MW:	62kD (Calculated) 62kD (Observed)

### Recommended Dilution Ratios

IHC:	1:100-500
WB:	1:2000-10000
IF:	1:200-1000
ELISA:	1:5000-20000
IP:	1:50-200

### Storage

-15°C to -25°C/1 year (Do not lower than -25°C)

### Basic Information

Clonality	Monoclonal
-----------	------------

### Immunogen Information

Specificity	Endogenous
-------------	------------

### Target Information

Gene name	EIF2AK2
Protein Name	Interferon-induced double-stranded RNA-activated protein kinase

Organism	Gene ID	UniProt ID
Human	5610	P19525
Mouse		Q03963

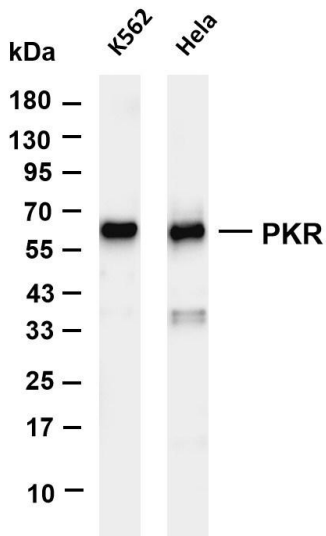
Cellular Localization	Cytoplasm. Nucleus. Cytoplasm, perinuclear region. Nuclear localization is elevated in acute leukemia, myelodysplastic syndrome (MDS), melanoma, breast, colon, prostate and lung cancer patient samples or cell lines as well as neurocytes from
-----------------------	---

advanced CreutzfeldtJakob disease patients.

Highly expressed in thymus, spleen and bone marrow compared to non-hematopoietic tissues such as small intestine, liver, or kidney tissues. Colocalizes with GSK3B and TAU in the Alzheimer disease (AD) brain. Elevated levels seen in breast and colon carcinomas, and which correlates with tumor progression and invasiveness or risk of progression.

## Tissue specificity

## Validation Data



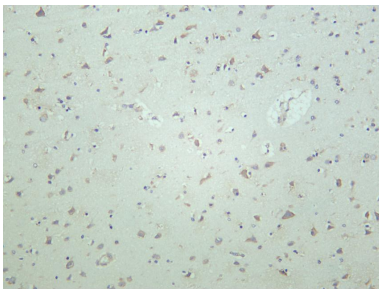
Various whole cell lysates were separated by 4-20% SDS-PAGE, and the membrane was blotted with anti-PKR antibody. The HRP-conjugated Goat anti-Rabbit IgG(H + L) antibody was used to detect the antibody.

Lane 1: K562

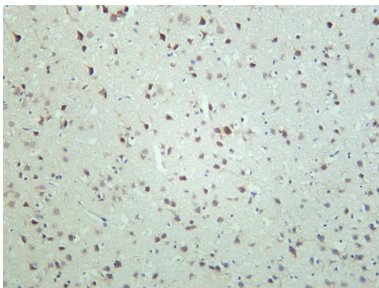
Lane 2: HeLa

Predicted band size: 62kDa

Observed band size: 62kDa



Human brain was stained with anti-PKR rabbit antibody



Rat brain was stained with anti-PKR rabbit antibody

For Research Use Only