

PLC γ 1 Rabbit mAb (AR1530)

Key Features

Host Species:	Rabbit
Reactivity:	Human, Mouse, Rat
Applications:	WB, IHC, IF, IP, ELISA
Isotype:	IgG, Kappa
MW:	149kD (Calculated) 149kD (Observed)

Recommended Dilution Ratios

IHC:	1:200-1000
WB:	1:2000-10000
IF:	1:200-1000
ELISA:	1:5000-20000
IP:	1:50-200

Storage

-15°C to -25°C/1 year (Do not lower than -25°C)

Basic Information

Clonality	Monoclonal
-----------	------------

Immunogen Information

Specificity	Endogenous
-------------	------------

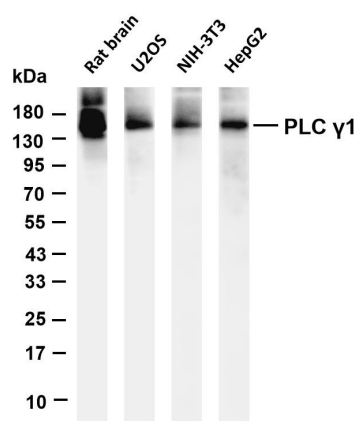
Target Information

Gene name	PLCG1
Protein Name	1-phosphatidylinositol 4,5-bisphosphate phosphodiesterase gamma-1

Organism	Gene ID	UniProt ID
Human	5335	P19174
Mouse	18803	Q62077
Rat	25738	P10686

Cellular Localization	Cytoplasm
Tissue specificity	Brain, Epithelium, Testis, Vein

Validation Data



Various whole cell lysates were separated by 4-20% SDS-PAGE, and the membrane was blotted with anti-PLC γ 1 antibody. The HRP-conjugated Goat anti-Rabbit IgG(H + L) antibody was used to detect the antibody.

Lane 1: Rat brain

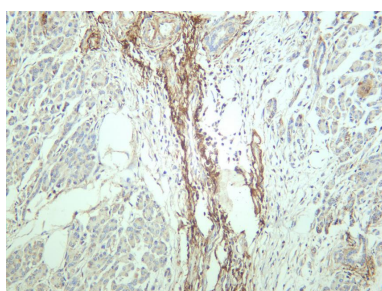
Lane 2: U2OS

Lane 3: NIH-3T3

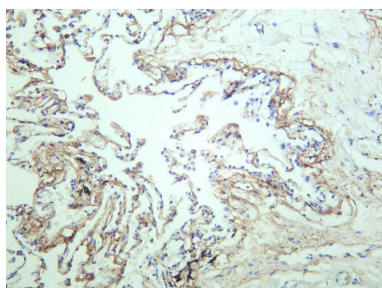
Lane 4: HepG2

Predicted band size: 149kDa

Observed band size: 149kDa



Human pancreas was stained with anti-PLC γ 1 rabbit antibody



Human lung carcinoma was stained with anti-PLC γ 1 rabbit antibody

For Research Use Only