

PLK1 Rabbit mAb (AR1531)

Key Features

Host Species:	Rabbit
Reactivity:	Human, Mouse, Rat
Applications:	WB, IHC, IF, IP, ELISA
Isotype:	IgG, Kappa
MW:	68kD (Calculated) 68kD (Observed)

Recommended Dilution Ratios

IHC:	1:200-1000
WB:	1:2000-10000
IF:	1:200-1000
ELISA:	1:5000-20000
IP:	1:50-200

Storage

-15°C to -25°C/1 year (Do not lower than -25°C)

Basic Information

Clonality	Monoclonal
-----------	------------

Immunogen Information

Specificity	Endogenous
-------------	------------

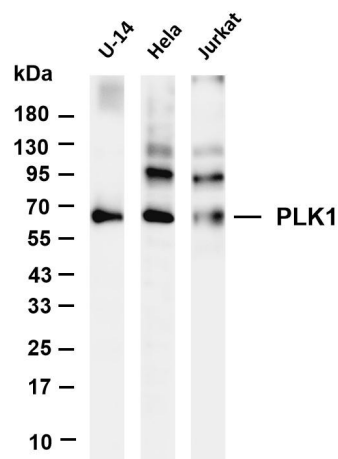
Target Information

Gene name	PLK1 PLK
Protein Name	PLK1

Organism	Gene ID	UniProt ID
Human	5347	P53350
Mouse	18817	Q07832
Rat	25515	Q62673

Cellular Localization	Nucleus
Tissue specificity	Placenta and colon.

Validation Data



Various whole cell lysates were separated by 4-20% SDS-PAGE, and the membrane was blotted with anti- PLK1 antibody. The HRP-conjugated Goat anti-Rabbit IgG(H + L) antibody was used to detect the antibody.

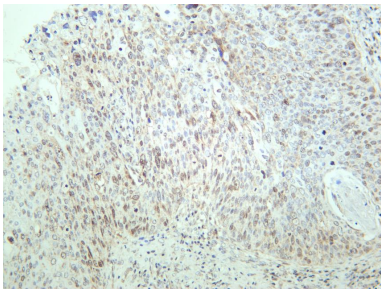
Lane 1: U-14

Lane 2: HeLa

Lane 3: Jurkat

Predicted band size: 68kDa

Observed band size: 68kDa



Human cervical carcinoma was stained with anti-PLK1 rabbit antibody

For Research Use Only