

## PP1 $\alpha/\beta$ Rabbit mAb (AR1534)

### Key Features

Host Species:	Rabbit
Reactivity:	Human, Mouse, Rat
Applications:	WB, IHC, IF, IP, ELISA
Isotype:	IgG, Kappa
MW:	38kD (Calculated) 38kD (Observed)

### Recommended Dilution Ratios

IHC:	1:200-1000
WB:	1:2000-10000
IF:	1:200-1000
ELISA:	1:500-20000
IP:	1:50-200

### Storage

-15°C to -25°C/1 year (Do not lower than -25°C)

### Basic Information

Clonality	Monoclonal
-----------	------------

### Immunogen Information

Specificity	Endogenous
-------------	------------

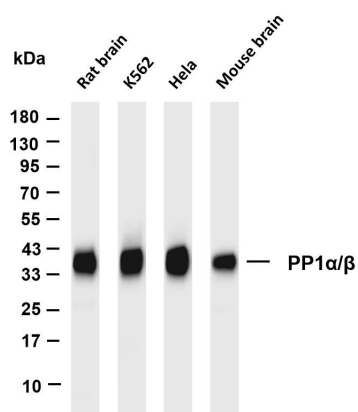
### Target Information

Gene name	PPP1CA; PPP1CB
Protein Name	Serine/threonine-protein phosphatase PP1-alpha catalytic subunit; Serine/threonine-protein phosphatase PP1-beta catalytic subunit

Organism	Gene ID	UniProt ID
Human	5500; 5499	P62136; P62140
Mouse	19045; 19046	P62137; P62141
Rat	24668; 25594	P62138; P62142

Cellular Localization	Cytoplasm, Nucleus
Tissue specificity	Colon carcinoma, Liver, Lung, Muscle, Pancreas, Placenta, Platelet

## Validation Data



Various whole cell lysates were separated by 4-20% SDS-PAGE, and the membrane was blotted with anti-PP1α/β antibody. The HRP-conjugated Goat anti-Rabbit IgG(H + L) antibody was used to detect the antibody.

Lane 1: Rat brain

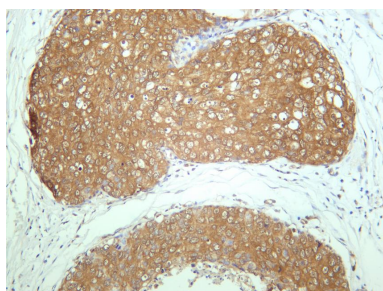
Lane 2: K562

Lane 3: HeLa

Lane 4: Mouse brain

Predicted band size: 38kDa

Observed band size: 38kDa



Human breast carcinoma was stained with anti-PP1α/β rabbit antibody

For Research Use Only