

PPIL1 Rabbit mAb (AR1535)

Key Features

Host Species:	Rabbit
Reactivity:	Human
Applications:	WB, Flow Cyt
Isotype:	IgG, Kappa
MW:	18kD (Calculated)
	18kD (Observed)

Recommended Dilution Ratios

WB:	1:1000-5000
FC:	1:100-300

Storage

-15°C to -25°C/1 year (Do not lower than -25°C)

Basic Information

Clonality	Monoclonal
-----------	------------

Immunogen Information

Specificity	Endogenous
-------------	------------

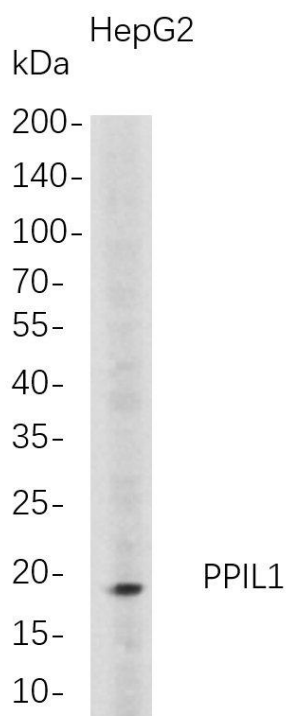
Target Information

Gene name	PPIL1; CYPL1; CGI-124; UNQ2425/PRO4984
Protein Name	Peptidyl-prolyl cis-trans isomerase-like 1; PPlase; Rotamase PPIL1

Organism	Gene ID	UniProt ID
Human	51645	Q9Y3C6

Cellular Localization	Nucleus.
Tissue specificity	Ubiquitous, with the most abundant expression in heart and skeletal muscle.

Validation Data



Western Blot analysis of HepG2 whole cell lysates were separated by 4-20% SDS-PAGE, and the membrane was blotted with anti-PPIL1 rabbit mAb. The HRP-conjugated Goat anti-Rabbit IgG(H + L) antibody was used to detect the antibody.

Lane 1: HepG2

Predicted band size: 18kDa

Observed band size: 18kDa

For Research Use Only