

PTDSS2 Rabbit mAb (AR1536)

Key Features

Host Species:	Rabbit
Reactivity:	Human
Applications:	WB,Flow Cyt,IP
Isotype:	IgG,Kappa
	56kD (Calculated)
MW:	54kD (Observed)

Recommended Dilution Ratios

WB:	1:1000-5000
FC:	1:100-300
IP:	1:50-100

Storage

-15°C to -25°C/1 year (Do not lower than -25°C)

Basic Information

Clonality	Monoclonal
-----------	------------

Immunogen Information

Specificity	Endogenous
-------------	------------

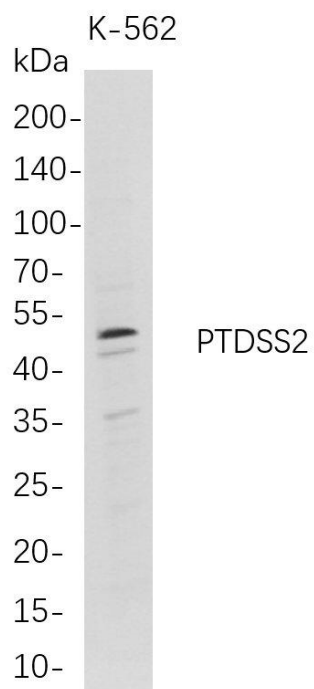
Target Information

Gene name	PTDSS2; PSS2
Protein Name	Phosphatidylserine synthase 2; PSS-2; PtdSer synthase 2; Serine-exchange enzyme II

Organism	Gene ID	UniProt ID
Human	81490	Q9BVG9

Cellular Localization	Endoplasmic reticulum membrane; Multi-pass membrane protein. Note=Highly enriched in the mitochondria-associated membrane (MAM).
-----------------------	----------------------------------------------------------------------------------------------------------------------------------

Validation Data



Western Blot analysis of K-562 whole cell lysates were separated by 4-20% SDS-PAGE, and the membrane was blotted with anti-PTDSS2 rabbit mAb. The HRP-conjugated Goat anti-Rabbit IgG(H + L) antibody was used to detect the antibody.

Lane 1: K-562

Predicted band size: 56kDa

Observed band size: 54kDa

For Research Use Only