

PYK2 Rabbit mAb (AR1537)

Key Features

Host Species:	Rabbit
Reactivity:	Human, Mouse, Rat
Applications:	WB, IHC, IF, IP, ELISA
Isotype:	IgG, Kappa
	116kD (Calculated)
MW:	116kD (Observed)

Recommended Dilution Ratios

IHC:	1:1000-4000
WB:	1:2000-10000
IF:	1:200-1000
ELISA:	1:5000-20000
IP:	1:50-200

Storage

-15°C to -25°C/1 year (Do not lower than -25°C)

Basic Information

Clonality	Monoclonal
-----------	------------

Immunogen Information

Specificity	Endogenous
-------------	------------

Target Information

Gene name	PTK2B
Protein Name	Protein-tyrosine kinase 2-beta

Organism	Gene ID	UniProt ID
Human	2185	Q14289
Mouse	19229	Q9QVP9
Rat	50646	P70600

Cellular Localization	Cytoplasm. Cytoplasm, perinuclear region. Cell membrane; Peripheral membrane protein; Cytoplasmic side. Cell junction, focal adhesion. Cell projection, lamellipodium. Cytoplasm, cell cortex. Nucleus. Interaction
-----------------------	---

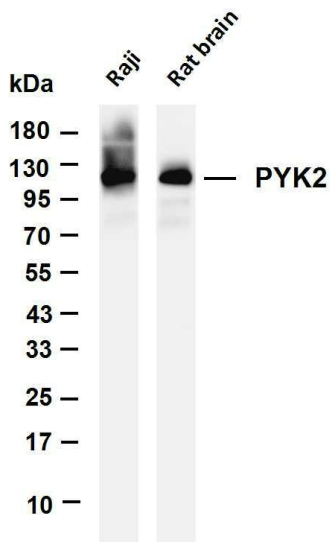
with NPHP1 induces the membrane-association of the kinase.

Colocalizes with integrins at the cell periphery.

Most abundant in the brain, with highest levels in amygdala and hippocampus. Low levels in kidney (at protein level). Also expressed in spleen and lymphocytes.

Tissue specificity

Validation Data



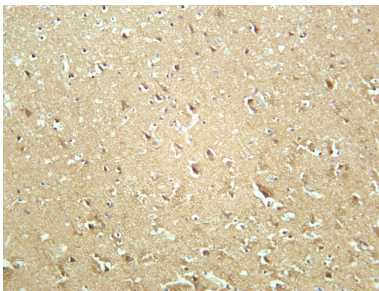
Various whole cell lysates were separated by 4-20% SDS-PAGE, and the membrane was blotted with anti-PYK2 antibody. The HRP-conjugated Goat anti-Rabbit IgG(H + L) antibody was used to detect the antibody.

Lane 1: Raji

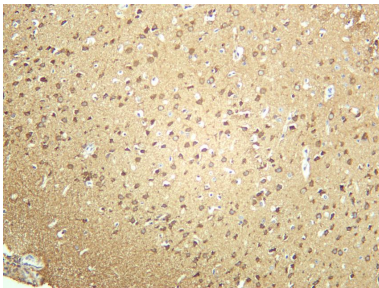
Lane 2: Rat brain

Predicted band size: 116kDa

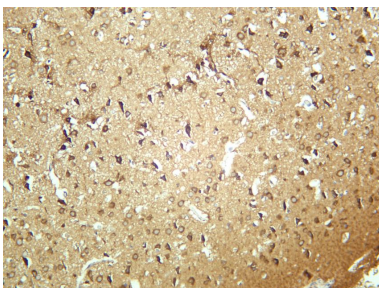
Observed band size: 116kDa



Human brain was stained with anti-PYK2 rabbit antibody



Mouse brain was stained with anti-PYK2 rabbit antibody



Rat brain was stained with anti-PYK2 rabbit antibody

For Research Use Only