

Raf-1 Rabbit mAb (AR1538)

Key Features

| | |
|---------------|-------------------|
| Host Species: | Rabbit |
| Reactivity: | Human, Mouse, Rat |
| Applications: | WB, IF, IP, ELISA |
| Isotype: | IgG, Kappa |
| | 73kD (Calculated) |
| MW: | 73kD (Observed) |

Recommended Dilution Ratios

| | |
|--------|--------------|
| WB: | 1:2000-10000 |
| IF: | 1:200-1000 |
| ELISA: | 1:5000-20000 |
| IP: | 1:50-200 |

Storage

-15°C to -25°C/1 year (Do not lower than -25°C)

Basic Information

| | |
|-----------|------------|
| Clonality | Monoclonal |
|-----------|------------|

Immunogen Information

| | |
|-------------|------------|
| Specificity | Endogenous |
|-------------|------------|

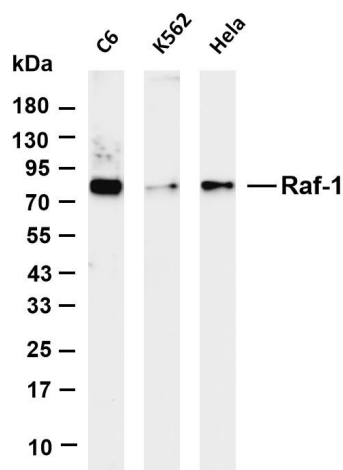
Target Information

| | |
|--------------|--|
| Gene name | RAF1 |
| Protein Name | RAF proto-oncogene serine/threonine-protein kinase |

| Organism | Gene ID | UniProt ID |
|----------|---------|------------|
| Human | 5894 | P04049 |
| Mouse | 110157 | Q99N57 |
| Rat | 24703 | P11345 |

| | |
|-----------------------|--|
| Cellular Localization | Membrane, Cytoplasm, Nucleus |
| Tissue specificity | In skeletal muscle, isoform 1 is more abundant than isoform 2. |

Validation Data



Various whole cell lysates were separated by 4-20% SDS-PAGE, and the membrane was blotted with anti-Raf-1 antibody. The HRP-conjugated Goat anti-Rabbit IgG(H + L) antibody was used to detect the antibody.

Lane 1: C6

Lane 2: K562

Lane 3: HeLa

Predicted band size: 73kDa

Observed band size: 73kDa

For Research Use Only