

## RAGE Rabbit mAb (AR1539)

### Key Features

Host Species:	Rabbit
Reactivity:	Human, Mouse, Rat
Applications:	WB, IHC, IF, IP, ELISA
Isotype:	IgG, Kappa
	43kD (Calculated)
MW:	52kD, 55kD (Observed)

### Recommended Dilution Ratios

IHC:	1:200-1000
WB:	1:2000-10000
IF:	1:200-1000
ELISA:	1:5000-20000
IP:	1:50-200

### Storage

-15°C to -25°C/1 year (Do not lower than -25°C)

### Basic Information

Clonality	Monoclonal
-----------	------------

### Immunogen Information

Specificity	Endogenous
-------------	------------

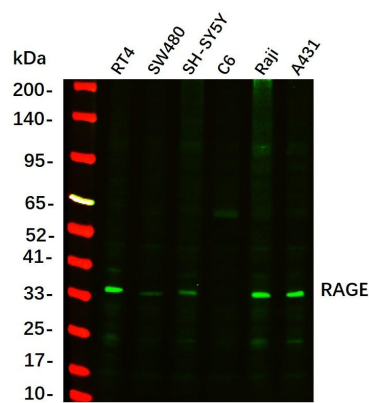
### Target Information

Gene name	AGER
Protein Name	Advanced glycosylation end product-specific receptor

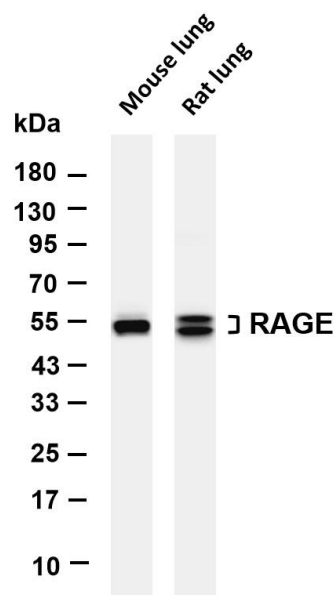
Organism	Gene ID	UniProt ID
Human	177	Q15109
Mouse		Q62151

Cellular Localization	[Isoform 1]: Cell membrane; Single-pass type I membrane protein.; [Isoform 2]: Secreted.; [Isoform 10]: Cell membrane; Single-pass type I membrane protein.
Tissue specificity	Endothelial cells.

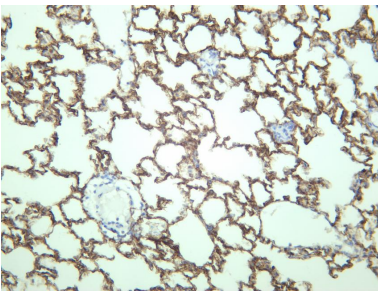
Validation Data



Western Blot analysis using various cell lysate, Proteins were separated by 4-20% SDS-PAGE, and the membrane was blotted with RAGE Rabbit mAb diluted at 1:2000. Secondary: Dylight 800, Goat Anti Rabbit IgG(1:10000)



Various whole cell lysates were separated by 4-20% SDS-PAGE, and the membrane was blotted with anti-RAGE antibody. The HRP-conjugated Goat anti-Rabbit IgG(H + L) antibody was used to detect the antibody.  
Lane 1: Mouse lung  
Lane 2: Rat lung  
Predicted band size: 43kDa  
Observed band size: 52kDa, 55kDa



Rat lung was stained with anti-RAGE rabbit antibody

For Research Use Only