

Raptor Rabbit mAb (AR1540)

Key Features

Host Species:	Rabbit
Reactivity:	Human, Mouse
Applications:	WB, IHC, IF, IP, ELISA
Isotype:	IgG, Kappa
	149kD (Calculated)
MW:	149kD (Observed)

Recommended Dilution Ratios

IHC:	1:200-1000
WB:	1:1000-5000
IF:	1:200-1000
ELISA:	1:5000-20000
IP:	1:50-200

Storage

-15°C to -25°C/1 year (Do not lower than -25°C)

Basic Information

Clonality	Monoclonal
-----------	------------

Immunogen Information

Specificity	Endogenous
-------------	------------

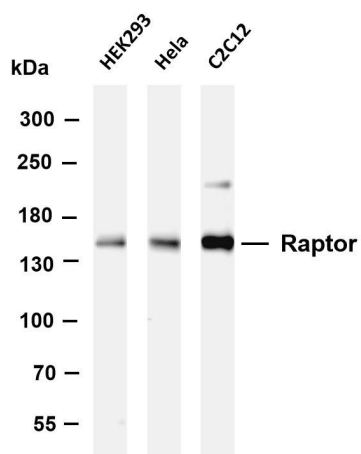
Target Information

Gene name	RPTOR KIAA1303 RAPTOR
Protein Name	Regulatory-associated protein of mTOR (Raptor) (p150 target of rapamycin (TOR)-scaffold protein)

Organism	Gene ID	UniProt ID
Human	57521	Q8N122
Mouse		Q8K4Q0

Cellular Localization	Cytoplasm
Tissue specificity	Highly expressed in skeletal muscle, and in a lesser extent in brain, lung, small intestine, kidney and placenta. Isoform 3 is widely expressed, with highest levels in nasal mucosa and pituitary and lowest in spleen.

Validation Data



Various whole cell lysates were separated by 4-8% SDS-PAGE, and the membrane was blotted with anti-Raptor antibody. The HRP-conjugated Goat anti-Rabbit IgG(H + L) antibody was used to detect the antibody.

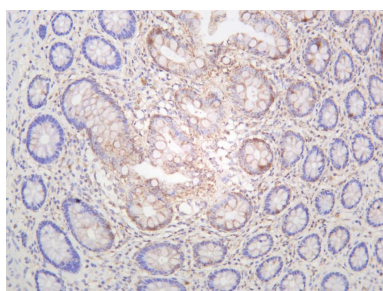
Lane 1: HEK293

Lane 2: HeLa

Lane 3: C2C12

Predicted band size: 149kDa

Observed band size: 149kDa



Human colon was stained with anti-Raptor rabbit antibody

For Research Use Only