

## RAVER2 Rabbit mAb (AR1541)

### Key Features

Host Species:	Rabbit
Reactivity:	Human
Applications:	WB,IHC,IF,ICC,IP
Isotype:	IgG,Kappa
	74kD (Calculated)
MW:	74kD (Observed)

### Recommended Dilution Ratios

IHC:	1:100-300
WB:	1:1000-5000
ICC/IF:	1:100-300
IP:	1:50-100

### Storage

-15°C to -25°C/1 year (Do not lower than -25°C)

### Basic Information

Clonality	Monoclonal
-----------	------------

### Immunogen Information

Specificity	Endogenous
-------------	------------

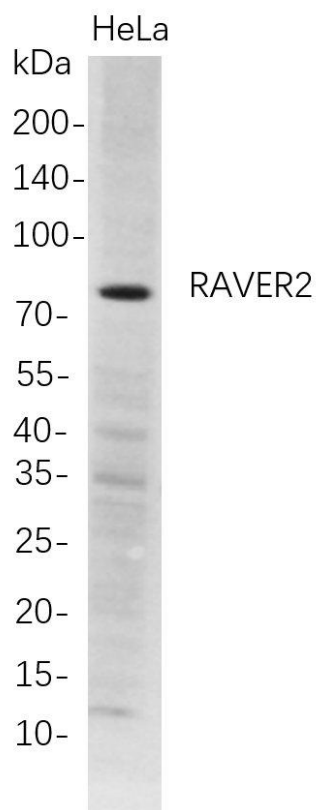
### Target Information

Gene name	RAVER2; KIAA1579
Protein Name	Ribonucleoprotein PTB-binding 2; Protein raver-2

Organism	Gene ID	UniProt ID
Human	55225	Q9HCJ3

Cellular Localization	Nucleus. Cytoplasm. Note: May shuttle between the nucleus and the cytoplasm.
-----------------------	---------------------------------------------------------------------------------

## Validation Data



Western Blot analysis of HeLa whole cell lysates were separated by 4-20% SDS-PAGE, and the membrane was blotted with anti-RAVER2 rabbit mAb. The HRP-conjugated Goat anti-Rabbit IgG(H + L) antibody was used to detect the antibody.

Lane 1: HeLa

Predicted band size: 74kDa

Observed band size: 74kDa

For Research Use Only