

Rab11 Rabbit mAb (AR1543)

Key Features

Host Species:	Rabbit
Reactivity:	Human, Mouse, Rat
Applications:	WB, IHC, IF, IP, ELISA
Isotype:	IgG, Kappa
	24kD (Calculated)
MW:	24kD (Observed)

Recommended Dilution Ratios

IHC:	1:1000-5000
WB:	1:2000-10000
IF:	1:200-1000
ELISA:	1:5000-20000
IP:	1:50-200

Storage

-15°C to -25°C/1 year (Do not lower than -25°C)

Basic Information

Clonality	Monoclonal
-----------	------------

Immunogen Information

Specificity	Endogenous
-------------	------------

Target Information

Gene name	RAB11A, RAB11B
Protein Name	Ras-related protein Rab-11A, Rab-11, YL8, Ras-related protein Rab-11B

Organism	Gene ID	UniProt ID
Human	8766; 9230	P62491; Q15907
Mouse	53869; 19326	P62492; P46638
Rat	53869; 79434	P62494; O35509

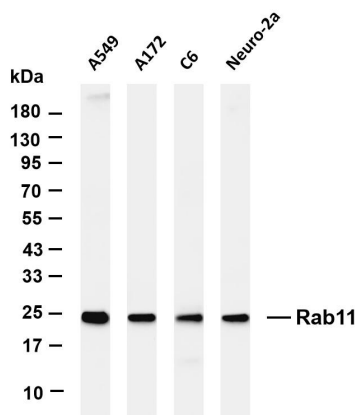
Cellular Localization	Cell membrane; Lipid-anchor. Recycling endosome membrane; Lipid-anchor. Cleavage furrow. Cytoplasmic vesicle, phagosome. Cytoplasmic vesicle membrane. Translocates with RAB11FIP2 from the vesicles of the
-----------------------	---

endocytic recycling compartment (ERC) to the plasma membrane (PubMed:11994279). Localizes to the cleavage furrow (PubMed:15601896). Colocalizes with PARD3, PRKCI, EXOC5, OCLN, PODXL and RAB8A in apical membrane initiation sites (AMIS) during the generation of apical surface and lumenogenesis (PubMed: 20890297). Recruited to phagosomes containing S.aureus or M.tuberculosis (PubMed:21255211). Recycling endosome membrane; Lipid-anchor; Cytoplasmic side. Cytoplasmic vesicle, secretory vesicle, synaptic vesicle membrane; Lipid-anchor; Cytoplasmic side. Cytoplasmic vesicle, phagosome membrane; Lipid-anchor; Cytoplasmic side. Recruited to phagosomes containing S.aureus.

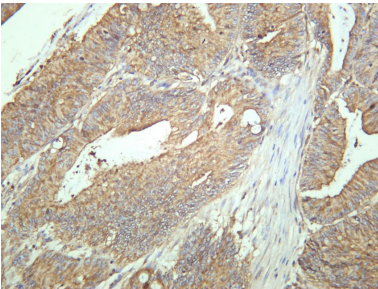
Tissue specificity

Expressed in esophagus squamous epithelium and 208 other cell types or tissues; B-cell lymphoma, Brain, Cerebellum, Muscle

Validation Data



Various whole cell lysates were separated by 4-20% SDS-PAGE, and the membrane was blotted with anti-Rab11 antibody. The HRP-conjugated Goat anti-Rabbit IgG(H + L) antibody was used to detect the antibody.
Lane 1: A549
Lane 2: A172
Lane 3: C6
Lane 4: Neuro-2a
Predicted band size: 24kDa
Observed band size: 24kDa



Human colon carcinoma was stained with anti-Rab11 rabbit antibody