

RBM43 Rabbit mAb (AR1544)

Key Features

| | |
|---------------|-------------------|
| Host Species: | Rabbit |
| Reactivity: | Human |
| Applications: | WB |
| Isotype: | IgG,Kappa |
| | 41kD (Calculated) |
| MW: | 39kD (Observed) |

Recommended Dilution Ratios

| | |
|-----|-------------|
| WB: | 1:1000-5000 |
|-----|-------------|

Storage

-15°C to -25°C/1 year (Do not lower than -25°C)

Basic Information

| | |
|-----------|------------|
| Clonality | Monoclonal |
|-----------|------------|

Immunogen Information

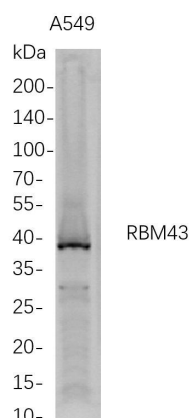
| | |
|-------------|------------|
| Specificity | Endogenous |
|-------------|------------|

Target Information

| | |
|--------------|--|
| Gene name | RBM43; C2orf38 |
| Protein Name | RNA-binding protein 43; RNA-binding motif protein 43 |

| Organism | Gene ID | UniProt ID |
|----------|---------|------------|
| Human | 375287 | Q6ZSC3 |

Validation Data



Western Blot analysis of A549 whole cell lysates were separated by 4-20% SDS-PAGE, and the membrane was blotted with anti-RBM43 rabbit mAb. The HRP-conjugated Goat anti-Rabbit IgG(H + L) antibody was used to detect the antibody.

Lane 1: A549

Predicted band size: 41kDa

Observed band size: 39kDa

For Research Use Only