

RBM1A1 Rabbit mAb (AR1545)

Key Features

| | |
|---------------|-------------------|
| Host Species: | Rabbit |
| Reactivity: | Human |
| Applications: | WB,IHC |
| Isotype: | IgG,Kappa |
| | 56kD (Calculated) |
| MW: | 68kD (Observed) |

Recommended Dilution Ratios

| | |
|------|-------------|
| WB: | 1:1000-5000 |
| IHC: | 1:100-300 |

Storage

-15°C to -25°C/1 year (Do not lower than -25°C)

Basic Information

| | |
|-----------|------------|
| Clonality | Monoclonal |
|-----------|------------|

Immunogen Information

| | |
|-------------|------------|
| Specificity | Endogenous |
|-------------|------------|

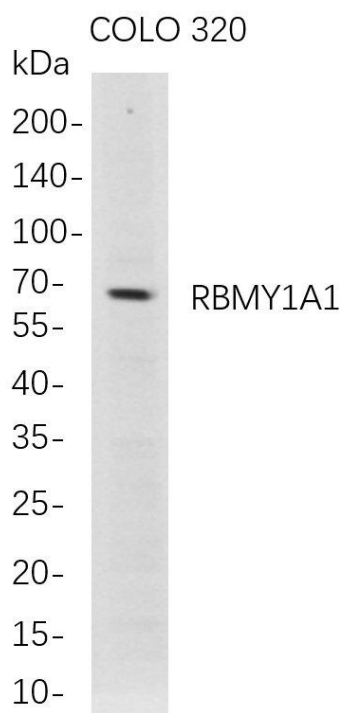
Target Information

| | |
|--------------|--|
| Gene name | RBM1A1; RBM1; RBM2; YRRM1; YRRM2 |
| Protein Name | RNA-binding motif protein, Y chromosome, family 1 member A1; RNA-binding motif protein 1; RNA-binding motif protein 2; Y chromosome RNA recognition motif 1; hRBM1 |

| Organism | Gene ID | UniProt ID |
|----------|-----------|------------|
| Human | 5940 | P0DJD3 |
| Mouse | 100862365 | O35698 |

| | |
|-----------------------|--|
| Cellular Localization | Nucleus. |
| Tissue specificity | Testis-specific. {ECO:0000269 PubMed:8269511}. |

Validation Data



Western Blot analysis of COLO 320 whole cell lysates were separated by 4-20% SDS-PAGE, and the membrane was blotted with anti-RBMV1A1 rabbit mAb. The HRP-conjugated Goat anti-Rabbit IgG(H + L) antibody was used to detect the antibody.

Lane 1: COLO 320

Predicted band size: 56kDa

Observed band size: 68kDa

For Research Use Only