

DNPH1 Rabbit mAb (AR1546)

Key Features

Host Species:	Rabbit
Reactivity:	Human
Applications:	WB,IHC
Isotype:	IgG,Kappa 19kD (Calculated)
MW:	19kD (Observed)

Recommended Dilution Ratios

WB:	1:1000-5000
IHC:	1:100-300

Storage

-15°C to -25°C/1 year (Do not lower than -25°C)

Basic Information

Clonality	Monoclonal
-----------	------------

Immunogen Information

Specificity	Endogenous
-------------	------------

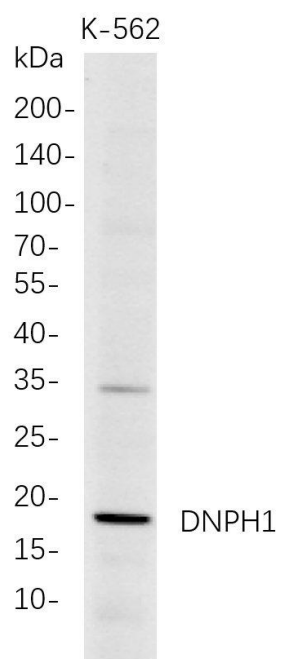
Target Information

Gene name	DNPH1; C6orf108; RCL
Protein Name	5-hydroxymethyl-dUMP N-hydrolase;2'-deoxynucleoside 5'-phosphate N-hydrolase 1; c-Myc-responsive protein RCL

Organism	Gene ID	UniProt ID
Human	10591	O43598
Mouse		Q80VJ3

Cellular Localization	Cytoplasm. Nucleus. Expressed at low levels in brain, colon, lung, peripheral blood leukocytes, placenta, small intestine, and thymus. Expressed at high levels in heart, kidney, liver, skeletal muscle and spleen. Overexpressed in a significant proportion of breast cancers. {ECO:0000269 PubMed:18726892}.
Tissue specificity	

Validation Data



Western Blot analysis of K-562 whole cell lysates were separated by 4-20% SDS-PAGE, and the membrane was blotted with anti-DNPH1 rabbit mAb. The HRP-conjugated Goat anti-Rabbit IgG(H + L) antibody was used to detect the antibody.

Lane 1: K-562

Predicted band size: 19kDa

Observed band size: 19kDa

For Research Use Only