

RPS6 Rabbit mAb (AR1548)

Key Features

Host Species:	Rabbit
Reactivity:	Human, Mouse, Rat
Applications:	WB, IHC, IF, IP, ELISA
Isotype:	IgG, Kappa
	29kD (Calculated)
MW:	31kD (Observed)

Recommended Dilution Ratios

IHC:	1:1000-5000
WB:	1:2000-10000
IF:	1:200-1000
ELISA:	1:5000-20000
IP:	1:50-200

Storage

-15°C to -25°C/1 year (Do not lower than -25°C)

Basic Information

Clonality	Monoclonal
-----------	------------

Immunogen Information

Specificity	Endogenous
-------------	------------

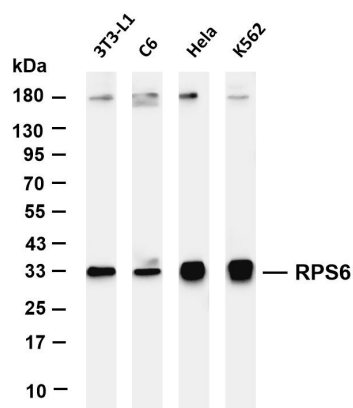
Target Information

Gene name	RPS6
Protein Name	40S ribosomal protein S6

Organism	Gene ID	UniProt ID
Human	6194	P62753
Mouse	20104	P62754
Rat	29304	P62755

Cellular Localization	Cytoplasm, Nucleus
Tissue specificity	Brain, Colon, Colon denocarcinoma, Epithelium, Muscle, Ovary, Pancreas, Placenta, Skin

Validation Data



Various whole cell lysates were separated by 4-20% SDS-PAGE, and the membrane was blotted with anti-RPS6 antibody. The HRP-conjugated Goat anti-Rabbit IgG(H + L) antibody was used to detect the antibody.

Lane 1: 3T3-L1

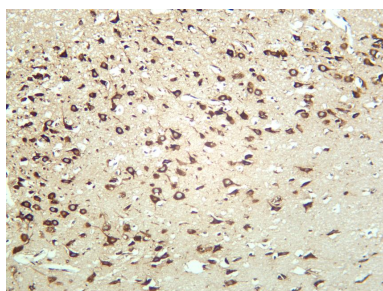
Lane 2: C6

Lane 3: HeLa

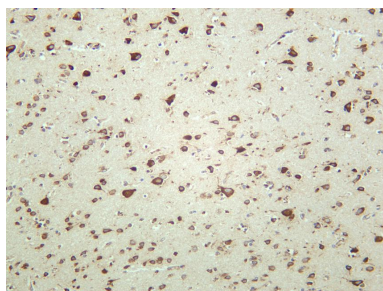
Lane 4: K562

Predicted band size: 29kDa

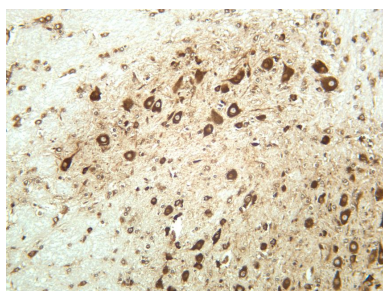
Observed band size: 33kDa



Rat brain was stained with anti-RPS6 rabbit antibody



Human brain was stained with anti-RPS6 rabbit antibody



Mouse brain was stained with anti-RPS6 rabbit antibody

For Research Use Only