

Rictor Rabbit mAb (AR1549)

Key Features

Host Species:	Rabbit
Reactivity:	Human, Mouse
Applications:	WB, IHC, IF, IP, ELISA
Isotype:	IgG, Kappa
MW:	192kD (Calculated) 192kD (Observed)

Recommended Dilution Ratios

IHC:	1:200-1000
WB:	1:2000-10000
IF:	1:200-1000
ELISA:	1:5000-20000
IP:	1:50-200

Storage

-15°C to -25°C/1 year (Do not lower than -25°C)

Basic Information

Clonality	Monoclonal
-----------	------------

Immunogen Information

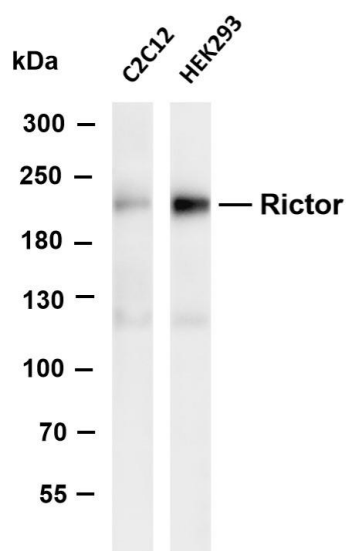
Specificity	Endogenous
-------------	------------

Target Information

Gene name	RICTOR KIAA1999
Protein Name	RICTR

	Organism	Gene ID	UniProt ID
	Human	253260	Q6R327
	Mouse	78757	Q6QI06
Cellular Localization	Cytoplasm		

Validation Data



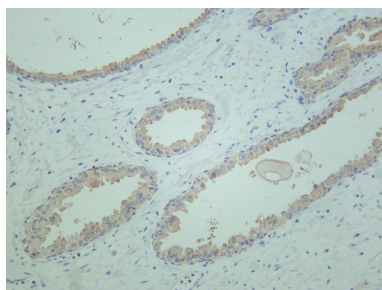
Various whole cell lysates were separated by 4-8% SDS-PAGE, and the membrane was blotted with anti-Rictor antibody. The HRP-conjugated Goat anti-Rabbit IgG(H + L) antibody was used to detect the antibody.

Lane 1: C2C12

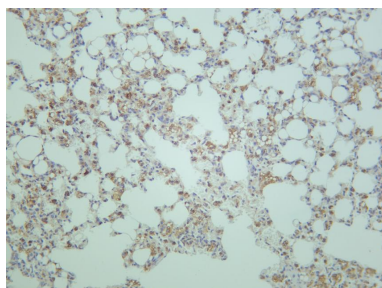
Lane 2: HEK293

Predicted band size: 192kDa

Observed band size: 192kDa



Human prostate was stained with anti-Rictor rabbit antibody



Mouse lung was stained with anti-Rictor rabbit antibody

For Research Use Only