

## RelB Rabbit mAb (AR1547)

### Key Features

Host Species:	Rabbit
Reactivity:	Human, Mouse, Rat
Applications:	WB, IHC, IF, IP, ELISA
Isotype:	IgG, Kappa
	62kD (Calculated)
MW:	62kD (Observed)

### Recommended Dilution Ratios

IHC:	1:200-1000
WB:	1:2000-10000
IF:	1:200-1000
ELISA:	1:5000-20000
IP:	1:50-200

### Storage

-15°C to -25°C/1 year (Do not lower than -25°C)

### Basic Information

Clonality	Monoclonal
-----------	------------

### Immunogen Information

Specificity	Endogenous
-------------	------------

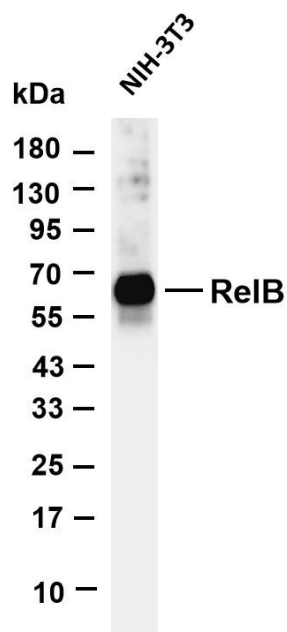
### Target Information

Gene name	RELB
Protein Name	Transcription factor RelB

Organism	Gene ID	UniProt ID
Human	5971	Q01201
Mouse	19698	Q04863

Cellular Localization	Nucleus.
Tissue specificity	Blood, T-cell

## Validation Data

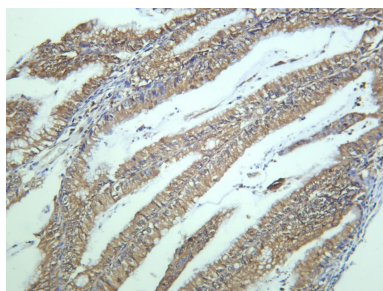


Various whole cell lysates were separated by 4-20% SDS-PAGE, and the membrane was blotted with anti-RelB antibody. The HRP-conjugated Goat anti-Rabbit IgG(H + L) antibody was used to detect the antibody.

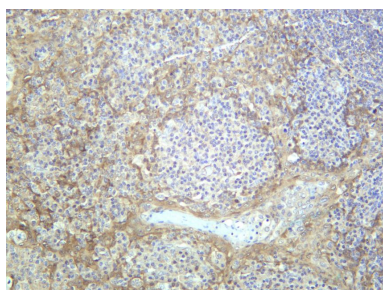
Lane 1: NIH-3T3

Predicted band size: 62kDa

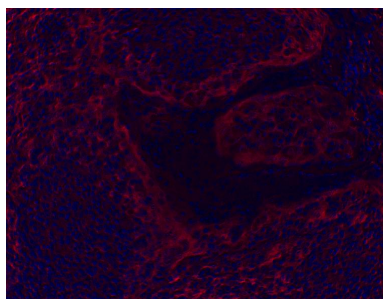
Observed band size: 62kDa



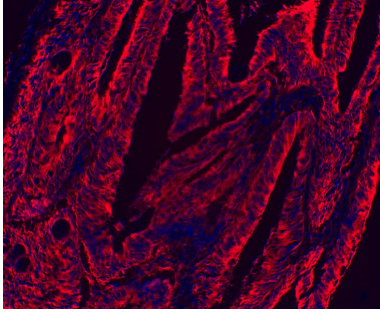
Human colon carcinoma was stained with anti-RelB rabbit antibody



Human tonsil was stained with anti-RelB rabbit antibody



Immunofluorescence analysis of Human tonsil



Immunofluorescence analysis of Human colon carcinoma

For Research Use Only