

## RSK2 Rabbit mAb (AR1550)

### Key Features

Host Species:	Rabbit
Reactivity:	Human, Mouse, Rat
Applications:	WB, IHC, IF, IP, ELISA
Isotype:	IgG, Kappa
MW:	84kD (Calculated) 84kD (Observed)

### Recommended Dilution Ratios

IHC:	1:200-1000
WB:	1:2000-10000
IF:	1:200-1000
ELISA:	1:5000-20000
IP:	1:50-200

### Storage

-15°C to -25°C/1 year (Do not lower than -25°C)

### Basic Information

Clonality	Monoclonal
-----------	------------

### Immunogen Information

Specificity	Endogenous
-------------	------------

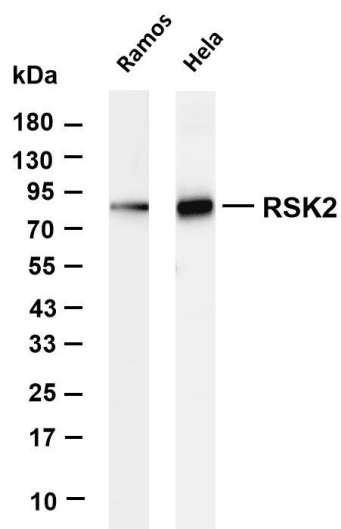
### Target Information

Gene name	RPS6KA3 ISPK1 MAPKAPK1B RSK2
Protein Name	RSK2

Organism	Gene ID	UniProt ID
Human	6197	P51812
Mouse	110651	P18654

Cellular Localization	Nucleus. Cytoplasm.
Tissue specificity	Expressed in many tissues, highest levels in skeletal muscle.

## Validation Data



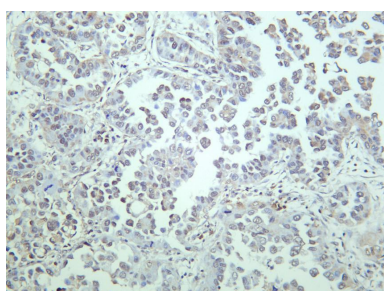
Various whole cell lysates were separated by 4-20% SDS-PAGE, and the membrane was blotted with anti-RSK2 antibody. The HRP-conjugated Goat anti-Rabbit IgG(H + L) antibody was used to detect the antibody.

Lane 1: Ramos

Lane 2: HeLa

Predicted band size: 84kDa

Observed band size: 84kDa



Human lung carcinoma was stained with anti-RSK2 rabbit antibody

For Research Use Only