

# RUNX1 Rabbit mAb (AR1551)

## Key Features

Host Species:	Rabbit
Reactivity:	Human,Mouse,Rat
Applications:	WB,IHC,IF,IP,ELISA
Isotype:	IgG,Kappa
MW:	49kD (Calculated) 43-55kD (Observed)

## Recommended Dilution Ratios

IHC:	1:200-1000
WB:	1:2000-10000
IF:	1:200-1000
ELISA:	1:5000-20000
IP:	1:50-200

## Storage

-15°C to -25°C/1 year (Do not lower than -25°C)

## Basic Information

Clonality	Monoclonal
-----------	------------

## Immunogen Information

Specificity	Endogenous
-------------	------------

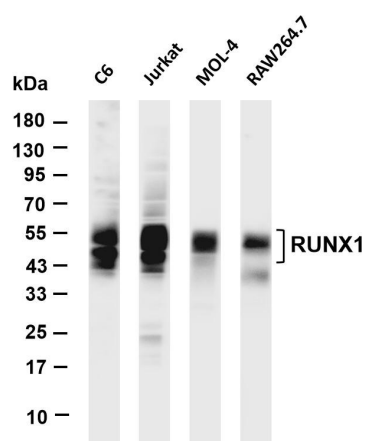
## Target Information

Gene name	RUNX1
Protein Name	Runt-related transcription factor 1

Organism	Gene ID	UniProt ID
Human	861	Q01196
Mouse	12394	Q03347
Rat	50662	Q63046

Cellular Localization	Nucleus
Tissue specificity	Expressed in all tissues examined except brain and heart. Highest levels in thymus, bone marrow and peripheral blood.

## Validation Data



Various whole cell lysates were separated by 4-20% SDS-PAGE, and the membrane was blotted with anti-RUNX1 antibody. The HRP-conjugated Goat anti-Rabbit IgG(H + L) antibody was used to detect the antibody.

Lane 1: C6

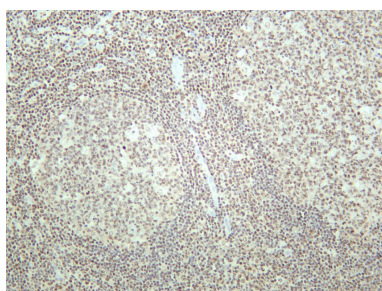
Lane 2: Jurkat

Lane 3: MOL-4

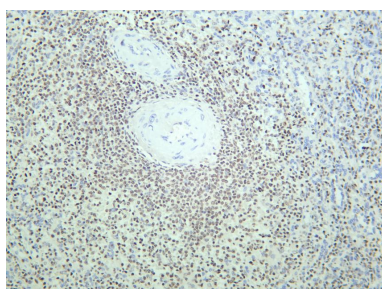
Lane 4: RAW264.7

Predicted band size: 49kDa

Observed band size: 43-55kDa



Human tonsil was stained with anti-RUNX1 rabbit antibody



Human spleen was stained with anti-RUNX1 rabbit antibody

For Research Use Only