

SATB2 Rabbit mAb (AR1552)

Key Features

Host Species:	Rabbit
Reactivity:	Human, Mouse, Rat
Applications:	WB, IHC, IF, IP, ELISA
Isotype:	IgG, Kappa
MW:	83kD (Calculated) 100kD (Observed)

Recommended Dilution Ratios

IHC:	1:100-1000
WB:	1:2000-10000
IF:	1:200-1000
ELISA:	1:5000-20000
IP:	1:50-200

Storage

-15°C to -25°C/1 year (Do not lower than -25°C)

Basic Information

Clonality	Monoclonal
-----------	------------

Immunogen Information

Specificity	Endogenous
-------------	------------

Target Information

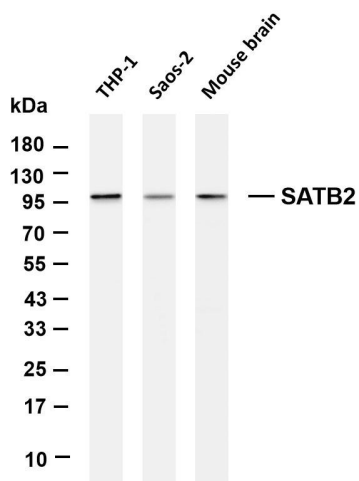
Gene name	SATB2 KIAA1034
Protein Name	DNA-binding protein SATB2 (Special AT-rich sequence-binding protein 2)

Organism	Gene ID	UniProt ID
Human	23314	Q9UPW6
Mouse		Q8VI24

Cellular Localization	Nucleus matrix.
Tissue specificity	High expression in adult brain, moderate expression in fetal brain, and weak expression in adult liver, kidney, and spinal cord and in select brain regions, including amygdala, corpus callosum, caudate

nucleus, and hippocampus.

Validation Data



Various whole cell lysates were separated by 4-20% SDS-PAGE, and the membrane was blotted with anti-SATB2 antibody. The HRP-conjugated Goat anti-Rabbit IgG(H + L) antibody was used to detect the antibody.

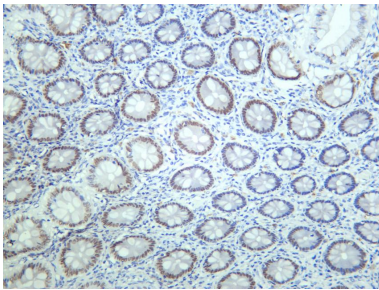
Lane 1: THP-1

Lane 2: Saos-2

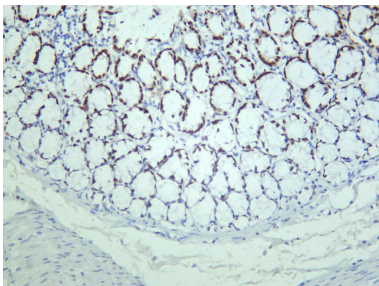
Lane 3: Mouse brain

Predicted band size: 83kDa

Observed band size: 100kDa



Human colon was stained with anti-SATB2 rabbit antibody



Rat colon was stained with anti-SATB2 rabbit antibody

For Research Use Only