

SESN2 Rabbit mAb (AR1553)

Key Features

Host Species:	Rabbit
Reactivity:	Human,Mouse,Rat
Applications:	WB,IF,IP,ELISA
Isotype:	IgG,Kappa
MW:	54kD (Calculated) 54kD (Observed)

Recommended Dilution Ratios

WB:	1:2000-10000
IF:	1:200-1000
ELISA:	1:5000-20000
IP:	1:50-200

Storage

-15°C to -25°C/1 year (Do not lower than -25°C)

Basic Information

Clonality	Monoclonal
-----------	------------

Immunogen Information

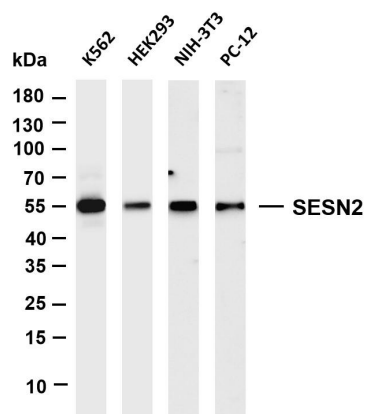
Specificity	Endogenous
-------------	------------

Target Information

Gene name	SESN2 SEST2
Protein Name	sesn2

	Organism	Gene ID	UniProt ID
	Human	83667	P58004
	Mouse	230784	P58043
Cellular Localization	Cytoplasm		
Tissue specificity	Widely expressed.		

Validation Data



Various whole cell lysates were separated by 4-20% SDS-PAGE, and the membrane was blotted with anti-SESN2 antibody. The HRP-conjugated Goat anti-Rabbit IgG(H + L) antibody was used to detect the antibody.

Lane 1: K562

Lane 2: HEK293

Lane 3: NIH-3T3

Lane 4: PC-12

Predicted band size: 54kDa

Observed band size: 54kDa

For Research Use Only